

TRINITY

SIXTH FORM ACADEMY



Ofsted
Outstanding
Provider



Prospectus 2024

Welcome to Trinity Sixth Form Academy

Information for parents and students looking to join the sixth form in 2024

Contents

Welcome from the Principal	3
Welcome from the Trinity MAT CEO	4
Vision, Mission, and Values	4
Academy Professional Standards and Civic Virtues (Our values):	4
Our Results	5
Outstanding in Every Area	6
Our Alumni	7
Trinity Enrich Curriculum	9
Subject Specific and Rewards Trips	10
Trinity+ Curriculum	11
Graduation	12
Student Support	13
Aspirations Curriculum:	14
Destinations Map	15
College Assembly and Trinity Talks Curriculum	16
Teaching and Learning	17
Revision	18
Facilities	20
Our Location	21
The Perfect Location	21
Our Courses	22

Welcome from the Principal

I am delighted to welcome you to our sixth form, at the heart of Halifax town centre. At Trinity Sixth Form Academy (TSFA) our mission is simple: the development of 'Life Ready Learners.'

The academy is unashamedly academic, designed to support the most able young people from our region in securing the best possible outcomes, which open a lifetime of future opportunities with the leading universities and employers. We offer a broad range of academic qualifications; twenty-eight A-level courses and a smattering of Applied General courses.

Our recent Ofsted inspection graded us as outstanding in every area and our new Trinity Scholars Programme is arguably the most transformational Oxbridge and Medical School pathway in the country.

We are one of the fastest growing colleges in England and in 2023 we achieved world class status. But our biggest achievements by far are those of our students. Over the past two years we have had nearly a dozen entries to Oxbridge

and medical school, along with entry to top tier universities and degree apprenticeships.

The secret to our success is simple: our people and cultivating our unique TSFA culture. Our emphasis on developing professional standards, fostering a love of learning, and wanting to give back to society, enables our students to be truly successful and resilient in all areas of their lives.

If you join TSFA, you are part of something truly exceptional, but don't take my word for it: experience TSFA for yourself at one of our open events.

I look forward to meeting you.



“

We are one of the fastest growing colleges in England and in 2023 we achieved world class status. But our biggest achievements by far are those of our students.

”

Welcome from the Trinity MAT CEO

In 2015, when the Trinity MAT was established, our brief was a simple one.

Whilst the intervening period of time has seen numerous different challenges, one thing has remained constant: we are determined to make a positive difference, on as wide scale as possible, where it matters most.

That is as complicated as we allow it to become. The Trust now contains eleven institutions, catering for ages 3 to 18, across five local authorities.

It also incorporates White Rose Maths, an organisation that has improved the life chances of countless young people, and the West Yorkshire Maths Hub – as well as working to support thousands of staff through our Trinity Institute of Education outreach work.

Our journey has taken us a long way; our ambition for young people, coupled with our desire to continually improve, tell us that this is just the start.

For those seeking educational excellence and involvement in the lives of their children, for those willing to accept that responsibility, for those looking at education from a different point of view, welcome to Trinity.

Vision, Mission, and Values

Three Year Academy Vision:

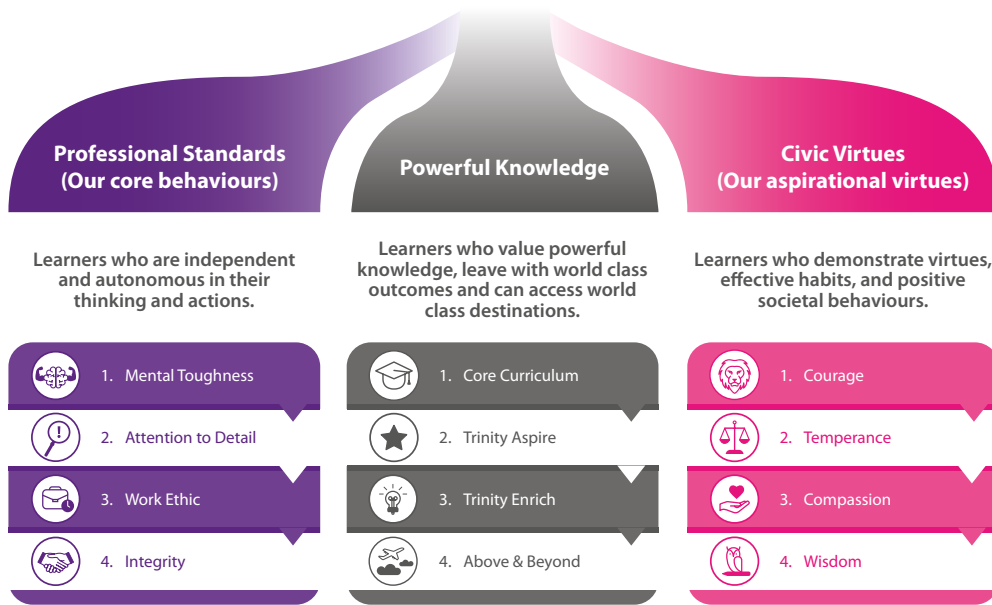
- To be the first-choice sixth form college for the most able students of Calderdale.
- To be the highest performing sixth form college in Calderdale on all accountability measures and in the top 10% for progress Nationally.

Mission for Students:

- Developing life ready learners. This means:
- Professional Standards: Learners who are independent and autonomous in their thinking and actions.
- Powerful Knowledge: Learners who value powerful knowledge, leave with world class outcomes, and who can access world class destinations.
- Civic Virtues: Learners who demonstrate virtues, effective habits, and positive societal behaviours.



Life Ready Learners



Our Results

Our students achieved a 99% pass rate in A-levels qualifications (based on 540 entries) and a 100% pass rate in Applied General qualifications (based on 214 entries)

Our Highlights:

- Secured almost a dozen places for students at Oxford and Cambridge Universities
- Over 55% of both TSFA A-level business and A-level economics students scored 1 full grade higher than similar students nationally, over 35% achieved A*–A.
- Secured a pass rate of over 99%, year on year for A-level qualifications
- 18% of TSFA physics students scored 1 full grade higher than similar students nationally, 50% achieved A*–A.
- Secured a pass rate of 100%, year on year for Applied General qualifications
- Achieved an Ofsted Outstanding grading in every area:
 - The quality of education = **Outstanding**
 - Behaviour and attitudes = **Outstanding**
 - Personal development = **Outstanding**
 - Leadership and management = **Outstanding**
 - Education programmes for young people = **Outstanding.**

*based on 2022 data



Outstanding in Every Area

“
Teachers’ imaginative approaches capture their students’ interest and imagination.”

“
Teachers skillfully plan and sequence learning so that students build upon their previous learning week by week.”



“Students thrive in the academy’s calm and harmonious environment. Their behaviour and attitudes are exemplary and in keeping with the academy’s high expectations and values.”

“Students enjoy their lessons, which are taught by skilled, enthusiastic and knowledgeable teachers.”

“Students make rapid progress in developing the knowledge, skills and behaviours that they need to achieve and progress to their next steps.”

“Through the ‘Trinity Graduate’ programme, students take qualifications in British Sign Language, first aid and driving theory practice as well as engaging in public speaking training, young enterprise and Duke of Edinburgh awards. Students take part in a range of sports including badminton, running and martial arts.”

“Students feel very safe and know how to keep themselves and their peers safe. They know that if they experience problems or have concerns about their safety or well-being, staff will support them and take prompt action.”

“Students feel safe and are safe.”

“Teachers and leaders are exemplary role models to students. Teachers wear smart business dress and are polite and respectful in their interactions with students.”

“The college environment is highly conducive to learning. College premises are modern and clean, with very well-equipped classrooms and workshops. As a result, a studious, purposeful, and professional environment prevails.”

“
Students participate in an extensive range of activities and projects that develop their confidence and broaden their interests.”

“Teachers ensure that students thoroughly understand how to improve their work.”

“Teachers are skilled in using strategies that deepen students’ knowledge and understanding.”

“Teachers ensure that students with SEND, including those with high needs, make significant progress and achieve their aspirations to progress to employment or higher education.”

“Leaders and staff create an exceptionally safe and welcoming culture where sexual abuse, bullying, harassment and peer-on-peer abuse are not tolerated.”

*All quotes taken from the Ofsted Report



Our Alumni



Jack Beevers

University of
Cambridge
(St John's)

First-class degree in Law



Charlotte Clegg

The Medical School
of Newcastle



Ella Beevers

University of
Cambridge
(Trinity College)

Modern Medieval
Languages



Charlotte Faulkner

University of
Cambridge
(St John's)

Law



Laura Cullen

University of
Sheffield

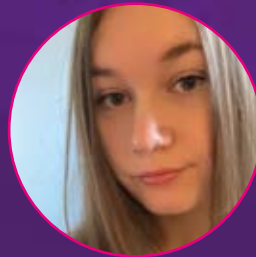
Dentistry



Taylor Campbell

University of
Oxford

Geography



Rebekah Garrish

University of
Cambridge

English



Mathew Grogan

The Medical School
of Newcastle



George Rook

University of
Cambridge

Modern and Medieval
Languages



Eleanor Aedy

University of
Cambridge

Geography



Lewis Mitchell

University of
Oxford

History



“

**To do a common thing
uncommonly well
brings success**

Henry J. Heinz

”

Trinity Enrich Curriculum

Trinity Enrich is so much more than just a post-16 programme of activities, it is your opportunity to experience things you haven't before and enhance your character in preparation for the world beyond education; ultimately making you 'life-ready'.

Every student at Trinity Sixth Form Academy will participate in our Trinity Enrich programme. The aim is to provide students with the practical and personal skills that universities and employers look for beyond academia.

All enrichments are levelled at TSFA as level 1, 2 or 3. Students sign up for enrichment as part of their induction in Year 12.

Our Trinity Enrich Curriculum offer:

Sport opportunities:

- TSFA Men's Rugby Team
- Football Academy
- Recreational Football
- TSFA Men's Football Team
- TSFA Women's Football Team
- TSFA Women's Netball Team
- TSFA Running Club
- TSFA Cricket Team
- TSFA Fitness Club
- Duke of Edinburgh Silver Award
- Duke of Edinburgh Gold Award
- Dragon boating competition
- Ski Trip



Ski trip

- International Ski Trip. Ski in one of the best ski resorts in Europe for 7 days. Ski tuition included.

Duke of Edinburgh

- All Year 12 students get the opportunity to sign up to the Duke of Edinburgh Award. Students can join either the Silver or the Gold Award. No previous experience needed.

Subject specific trips

- Students will get a variety of opportunities through their curriculum subjects to expand their knowledge outside of the classroom.

Super Curriculum opportunities:

- Amnesty International
- Pre-Med Enrichment
- Debate Club
- Psychology Club
- Crime Case Club
- Software Programming
- Drama & Dance Club
- Allied Healthcare Club
- Reading Club
- Writing Workshops
- British Sign Language
- TSFA Media Team
- Delivering a Trinity Talks
- MOOCs
- Pupil Leadership Group
- Head Student
- First Aid
- History Club
- Anatomy Club
- Gardening Club
- Chess and Board Game Club
- Earthshot
- TSFA Radio Station

Rewards trips

Rome trip

- Explore the Colosseum, Roman Forum, Piazza Navona, Pantheon, Spanish Steps, Trevi Fountain Vatican Museum, Sistine Chapel and St Peter's Basilica.

University trips

- Students at TSFA will get a variety of opportunities to visit universities and experience life as a student for the day. These trips are extremely helpful in helping our students decide on their next steps after college.

Trinity Scholars Programme

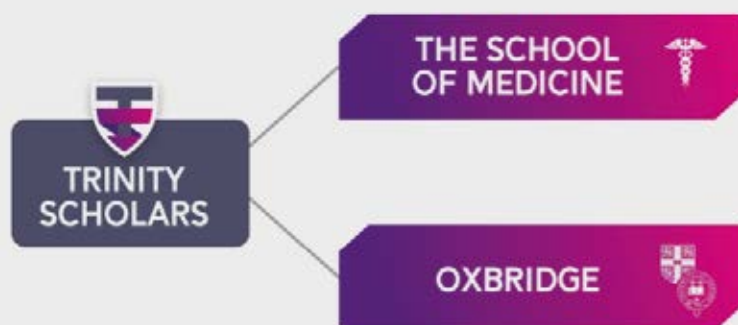
The Trinity Scholars programme is truly distinctive in that it enables students to benefit from the best advice, information, opportunities and guidance right through their education, from primary school culminating in their post 16 education.

TRINITY SCHOLAR STUDENTS BENEFIT FROM AN ADDITIONAL INVESTMENT OF UP TO

£6000

Trinity Scholars is unashamedly academic and is available exclusively to students that sit in the highest tier of academic attainment at GCSE level. The programme is designed to give maximum exposure to a wide range of experiences, research and academia that facilitates students' equitable entry into either of the two most competitive and elite pathways: Oxbridge and/or Medical School. Our initiative offers extensive extra-curricular opportunities that are designed to raise aspirations, embed key skills and secure places.

If students would like to apply for the Scholars programme and live outside of a 6-mile radius of the college, we will reimburse travel up to the cost of £1000. All Scholars will receive either an IPAD or Laptop to support with their studies.

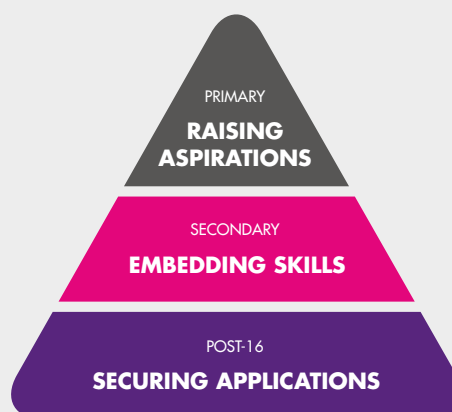


Trinity Scholars at Primary and Secondary School

The Trinity Scholars Programme can be accessed early at any Trinity Multi Academy Trust institution at both Secondary and Primary Level. The purpose of Trinity Scholars across the different phases of education is to:

- ✓ **Raise Aspirations** (Primary)
- ✓ **Embed Skills** (Secondary)
- ✓ **Secure Applications** (Post-16)

For more information about Trinity Scholars at Primary or Secondary, please contact your child's academy and ask to speak to the Trinity Scholars programme lead.



Trinity+ Curriculum

Pivotal to our mission of developing Life Ready Learners is Trinity+, which encompasses much of our wider curriculum offer. Through a dedicated weekly lesson with their personal progress tutor, students will take part in:

- A Personal Development Lesson
- Self-Appraisal
- Independent Study & Monitoring Meetings
- Life Ready Lesson
- Literary Message

Ultimately, underpinning Trinity+ is our desire to build active citizens who contribute positively to society and who can respond to challenge. Trinity+ creates an opportunity for us to do this in a way that fosters self-confidence and belief so that our students are truly life ready.

At the end of each half term all students will work together within their house and compete in a House Challenge during their Trinity+ session to gain valuable points for the house leaderboard.



“

Trinity+ creates an opportunity for us to do this in a way that fosters self-confidence and belief so that our students are truly life ready.

”



Graduation

When students join Year 12, they are enrolled onto our Graduation Programme. By achieving a set of specific criteria, they can graduate into Year 13 with confidence and knowledge of their strengths and areas for improvement.

Students work towards five graduation criteria which are centered around:

- Attendance and Punctuality
- Professional Conduct
- Trinity Enrich
- Work Experience
- Progress and Attainment

The purpose of Graduation is threefold:

- Graduation serves to promote the TSFA ethos of self-improvement, through inward reflection, and the continuous reinforcement of our core professional standards.
- Graduation provides a scaffold and benchmarking tool for our wider/super curricular provision, offering an opportunity to measure student success and accomplishment beyond the classroom.
- Graduation requires students to set the highest expectations of themselves, to welcome challenge and opportunity and to act with courage and integrity.

Every student tracks their progress weekly through self-appraisal. Whilst of course academic attainment is crucial, the Graduation Programme emphasises the importance of holistic, individual development. It is our opportunity to celebrate students for their qualities and virtues and requires them to get involved in activities outside of the classroom. We will celebrate your achievements at the end of Year 12 with a 'Graduation Ceremony', attended by staff and parents to recognise your efforts.





Student Support

It is important to us that students feel confident they know who to access at the academy, if they are struggling in any way. Our Personal Progress Tutor and Safeguarding team are always on hand and available in the academy. We offer students a unique package of support to ensure that they achieve their potential and flourish in their time with us. Our support includes:

A dedicated Personal Progress Tutor (PPT)

Every student is assigned a PPT. The role of a PPT is that of an academic and pastoral mentor. Every student meets regularly with their PPT and has access to them throughout the week. Where specific needs are identified, the PPT will put together a package of bespoke support.

A dedicated Well-being Team

Students also have access to our specialist safeguarding team which consists of staff who are trained at a 'designated safeguarding lead' (DSL) level.

Wider Services

We have worked hard to foster many links with specialist agencies to provide our students with a wide range of support. We work with external agencies such as Invictus, Brew Project, VitaMinds, Positive Identities, SmartMove amongst many others. We have also grown our on-site provision and have recently added an Educational Mental Health Practitioner to our team who is overseen by the NHS to offer evidence-based intervention. In addition to this, students will also have access to a number of on-site counsellors and a school nursing team to ensure that all students' needs are met.

Counselling & Mental Health Support team

In addition to our Student Wellbeing Manager we also have a SEMH (social, emotional and mental health) Mentor who is available during the college day to offer a range of support for students. The SEMH mentor works alongside other agencies to ensure appropriate referrals are put in place with external agencies for more specialised support.

Financial Support

The Bursary and Free Meal Fund exists to enable students who have been identified as experiencing the greatest need for financial support to remain in education and thereby improve their choices in life. The fund may aid with travel, meals, trips and essential curriculum resources if you fall within the priority groups.

SEND (Special Educational Needs and Disability) Support

We provide individual support and targeted interventions throughout the academic year to ensure that all students achieve their desired outcomes. TSFA is committed to providing an inclusive education and ensuring all students are given opportunities to develop as life ready learners.



Lucy Smith
Associate Assistant Principal



Lisa Armstead
Student Wellbeing Manager



Deb Morse
SENCo



Zoe Brand
Personal Progress Tutor

Aspirations Curriculum:

The purpose of the Trinity Aspire Curriculum is to make sure that students leave us prepared for the next step on their journey, whether that be to higher education or employment. We aim to raise aspirations and promote social mobility, ensuring that all students have access to the best opportunities.

We aim to provide excellent quality, neutral information and guidance to all of our students to allow us to provide them with the best possible foundations to start their future.

The Trinity Aspire Curriculum provides students with the knowledge and skills they need to be Life Ready Learners and achieve success in the wider world. In 2021, we were delighted to be awarded the Quality in Careers Standard, receiving full accreditation, meeting all eight Gatsby benchmarks:

- A stable career programme
- Learning from career and labour market information
- Addressing the needs of all students
- Linking curriculum learning to careers
- Encounters with employers and employees
- Experience of workplaces
- Encounters with further and higher education
- Personal guidance

Every student at TSFA enrolls onto one of three pathways (some may enrol on two pathways because they are not sure whether they wish to go to university after college).

The pathways are:

- University Pathway
- World of Work Pathway
- Trinity Scholars Pathway (for some students this will become the Sutton 30 Pathway)

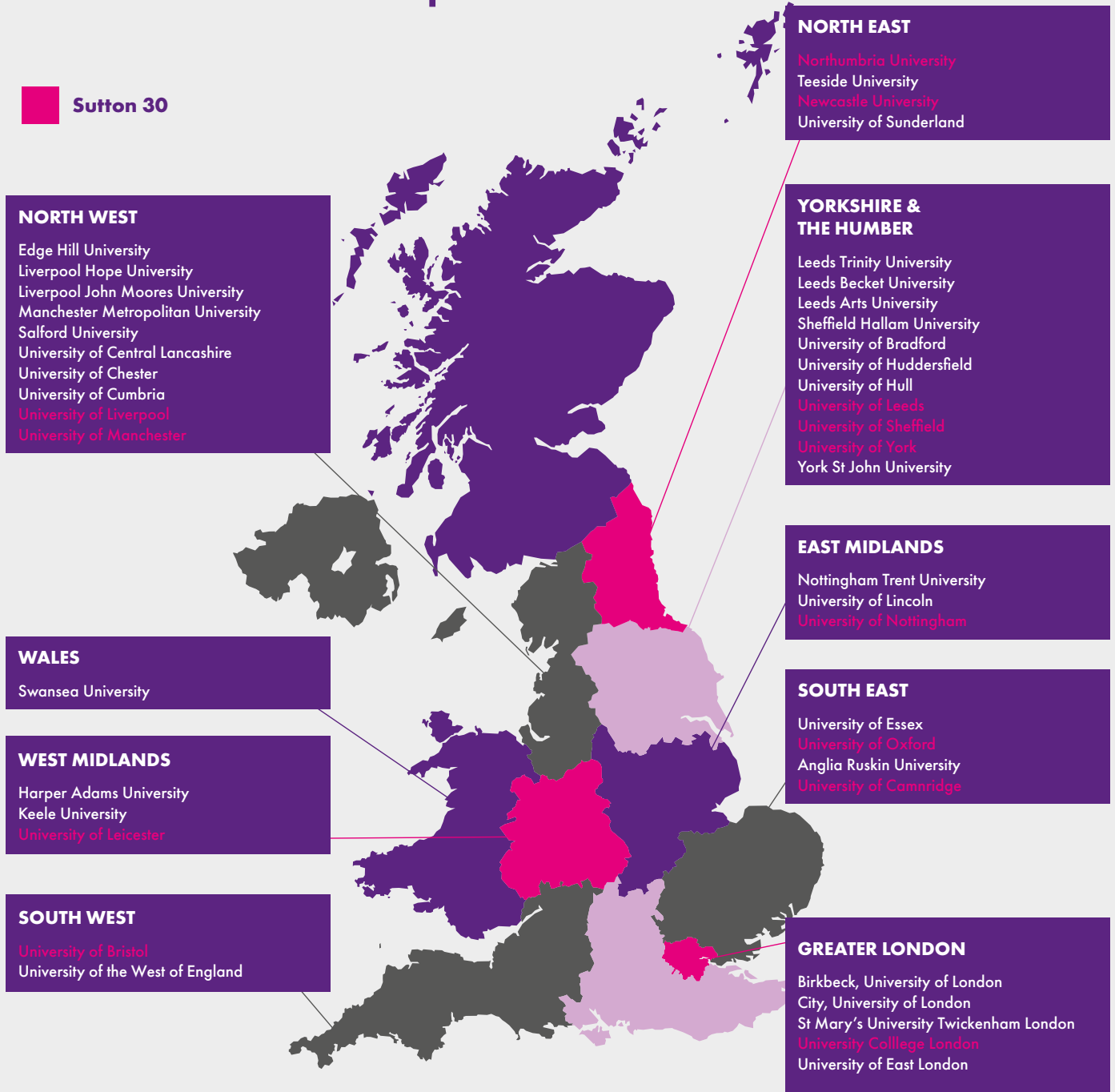
Membership is fluid, and students can re-join other pathways, if they decide on a change in direction post college. Approximately 70% of TSFA students will go on to university every year. 10% will seek out apprenticeships and approximately 20% will go straight into employment.

Oxbridge, medical school and degree apprenticeships are three of the most sought-after and prestigious destinations available to young people currently. Whichever pathway a student chooses, they will receive tailored support and careers education through:

- **Our Core Curriculum:** Every subject area explicitly teaches associated career routes, required skills and above and beyond subject knowledge.
- **Trinity+ Curriculum:** Our Trinity+ curriculum features extensive careers education, information, advice and guidance as part of both the Personal Development segment and the 'Life Ready' segment in Year 12.
- **One-to-one Careers Guidance:** Our fully qualified, full time careers advisors meet with students on a daily basis to ensure they receive the highest quality, impartial advice and guidance.
- **Trinity Enrich:** Careers education and soft skill development features in certain Trinity Enrich opportunities.

Destinations Map

Sutton 30



College Assembly and Trinity Talks Curriculum

College Assembly

Every week, students can hear from a member of our academy community via weekly assembly. Assemblies take place live in college and are beamed out on Teams so that all students can access them. Special assemblies are held at the Halifax Minster. The assembly curriculum is designed to ensure that students are inspired to be successful, it is not a vehicle for simply passing on messages and notices. In addition, termly celebration assemblies celebrate a range of achievements from the term, including attendance, achievement points, enrichment and students going above and beyond. Students are rewarded with shout outs and a range of prizes to acknowledge outstanding achievement.

Trinity Talks

Special guests are invited in once per term to share inspiring stories from industry, academia and/or personal experience. This gives students an insight into the mindset, personality traits and professional standards of highly successful people across a range of fields. In addition, students can also get involved in presenting a Trinity Talks.

Trinity Talks take place on a termly basis with the aim to inspire our students through hearing from guest speakers from a wide range of disciplines and backgrounds. The themes delivered by guest speakers aim to match and reflect our TSFA Creed.



Teaching and Learning

Intent

At Trinity Sixth Form Academy we aim to equip all learners with the necessary knowledge, skills and behaviours to become 'life ready learners' in order to progress successfully into their chosen future pathways. Coherent and sequential curriculum planning sits at the heart of this goal and is supported by dynamic area response plans to maintain an acute focus on continuous improvement and relevant developments.

To implement this vision we deliver comprehensive core, curriculum and enhanced CPD opportunities to ensure that our staff are immersed in the latest pedagogies and that assessment for learning is practised routinely to consistently support the learning process.

Complementary to this are the robust quality assurance processes which, together, facilitate a triangulated approach to delivering great education.

Our aim is to create high performing teams which lead to world class provision for students and the whole staff body.

Year 12

Our aim is to embed the necessary knowledge, skills and behaviours needed for success. In Year 12 students are inducted into subjects gradually to ensure that we have the right students on the right courses and that they have the best opportunities to succeed and progress onto their chosen destinations. The course delivery is deliberately slowed down in the first 42 days in order to embed skills, rehearse previous GCSE content and to slowly build independent tasks to form the routine behaviours necessary for successful completion of these heightened academic courses.

Year 13

Our aim is to build on and enhance the knowledge, skills and behaviours needed for success. In Year 13 we aim to transition students into working increasingly independently so that they are truly 'life ready'. Independent Study has moved to 5 hours a week and robust, calendared High Intensity Independent Practice (HIIP) creates more opportunities to practice those vital revision and examination skills.

Independent Study

Research suggests that the students who perform best commit to at least 5 hours of independent study per week, per subject. Ideally, this should not all take place in one sitting and independent study should be set in a manner where it can be spread across a working week. It is our aim to gradually build and embed the necessary skills needed for students to be able to do this independently by the time they reach Year 13.

All teaching staff set independent study weekly through the Assignments section of the MS Teams classroom.

What constitutes great independent study at TSFA:

Review	Retrieval practice: Retrieval practice should involve low stakes recall, that is short and sharp in duration (e.g., 20 minutes) but with an emphasis on it being repeated (Ebbinghaus).
	Revision activity from the 6 steps (ideally something from steps 1 - 3: 'Review,' 'Transform' and/or 'Quiz').
Do	Practice: This can take the form of videos, reading, mind maps, Cornell notes, making flashcards etc.
	Application activity from the 6 steps to revision (ideally something from steps 4 - 5: 'Exam Questions and Exam Papers'. It could also be a planned response to an exam question.
Preview	Pre-read: This can be step 6 ('Above and Beyond') and/or what is to be covered in the next lesson.

Revision

The TSFA 6 Steps to Revision is based on research including the work of the VESPA Mindset team, which suggests that effort, in particular the right type of effort, makes a significant difference to student performance at A Level (Oakes & Griffin, 2016).

Our six steps are supported by Anglia Ruskin University (ARU) and have been adapted from a blog first published by the Megan Issott (Long Road Sixth Form College) in the Sixth Form Colleges Association in 2022.

Students are explicitly taught the '6 Steps' within their Trinity+ sessions and staff link the independent study they set to one of the '6 Steps' so that students are able to see the learning process in action and understand how to revise for key assessments.

Review: students are encouraged to go over previous lesson content at strategic points in line with the forgetting curve.

Transform: flashcards, mind-maps, Cornell notes – students need to be taught how to use these methods successfully.

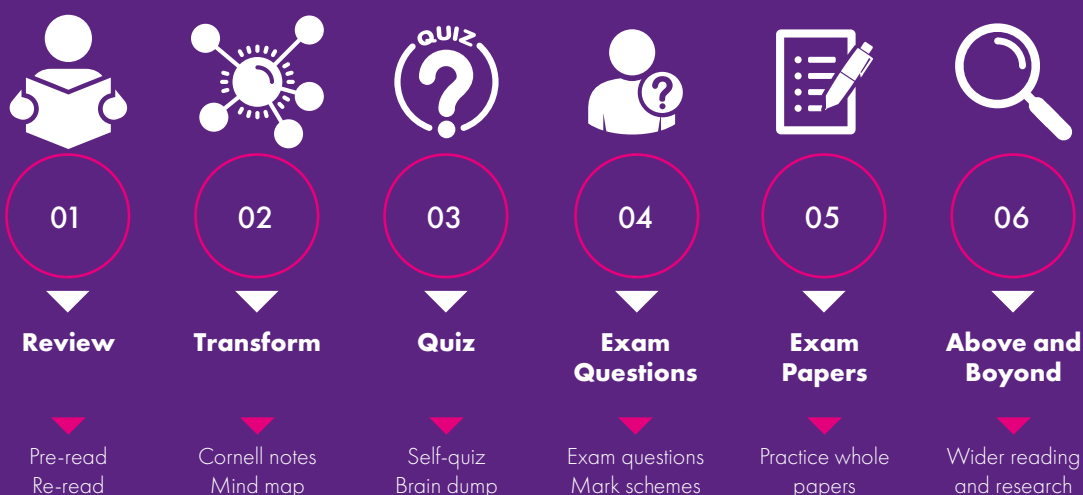
Quiz: regular low stakes testing to develop strong neural pathways between the short- and long-term memory.

Exam Questions: ensuring students are confident in applying the knowledge. This is often done through H.I.I.P. as well as independent study.

Exam Papers: more frequently set as independent study in the latter part of Y13 but also used in assessments to form a holistic picture of attainment.

Above and Beyond: staff are expected to set an element of challenge within independent study to support excellence in students. This may take the shape of podcasts/videos/visits/supplementary reading etc.

6 Steps to revision



The '6 Steps' provide staff and students with a framework for revision, that is structured and progressive.

The idea is that students access the full range of steps, rather than focusing too much on any one in isolation. The progressive nature of the steps means that students should aspire to revise more using exam questions and past papers, as they progress in terms of knowledge, skills and study habits. As students near examinations, steps 4 and 5 should be emphasised.

High Intensity Independent Practice (H.I.I.P.)

In response to stakeholder feedback, we developed a commitment to embedding opportunities for students to experience working in timed conditions and in similarly 'intense' frameworks to those which they might experience within an examination room.

In Year 12, students will have formal HIIP calendared termly whereas after Christmas in Year 13, it becomes a fortnightly strategy to help students to become 'exam ready'. All formal HIIP tasks are marked using the strategies outlined in our marking policy and feedback is given via green sheets, to which students then respond in purple pen. All formal HIIP work is logged onto students 'tracking sheets' at the front of folders/booklets/exercise books.

Assessment

The purpose of assessment at TSFA (our intent):

- To provide meaningful feedback to students
- To provide clarity to teachers on student knowledge and skills
- To prepare students for final exams
- To promote self-reflection and confidence in students



Our approach to assessment:

In Year 12, assessment is used in a low stake's manner in the first term. It is important that students achieve two things in this first term. Firstly, it should ensure that students are informed as to whether their Level 3 course choices are correct leading to commitment to the courses that have been committed to by the 42-day deadline.

Secondly, and only after this process is secure, assessment should enable students to experience some success and thus in turn, boost confidence, facilitate independence and self-reflection, and plant a seed for the benefits of autonomy.

Study skills are taught extensively through this early period, so that students can see and value the application of our professional standards into their day-to-day work and success.

As Year 12 progresses, independent study will gradually increase, the volume of knowledge required in assessment increases, the range of skills practiced grows and students will strive to achieve and maintain their target grades. In Year 13, assessment is tapered to become increasingly more realistic and difficult with three of the four assessments offered being Trial Exams.

The purpose of this strategy is to ensure students are prepared to the point where they achieve optimal level, both in terms of mindset/attitude towards exams and performance.

High Intensity Independent Practice (HIIP) tasks:

- HIIP stands for High Intensity Independent Practice (exam questions) which are carried out bi-weekly (from January) in Year 13 and bi-termly in Year 12.

Progress Checks (PCs):

Year 12 are assessed formally 3 times in an academic year

- 2 of the 3 PCs are followed up by Achievement & Improvement (A&I) meetings
- 2 of the 3 PCs are followed up by Monitoring meetings

Year 13 are assessed formally 4 times in an academic year

- 3 of the 4 PCs are followed up by A&I meetings
- 1 of the 4 PCs is followed up by Monitoring meetings

Assessment calendars are shared at the beginning of each academic year. Parental reports follow every progress check assessment.



“

Having a world class place to study and work does help produce world class outcomes.

”

Facilities

In our brand new, state-of-the-art building we are fortunate to have a plethora of resources to support staff and students in delivering the highest quality of teaching and learning.

Brand new building

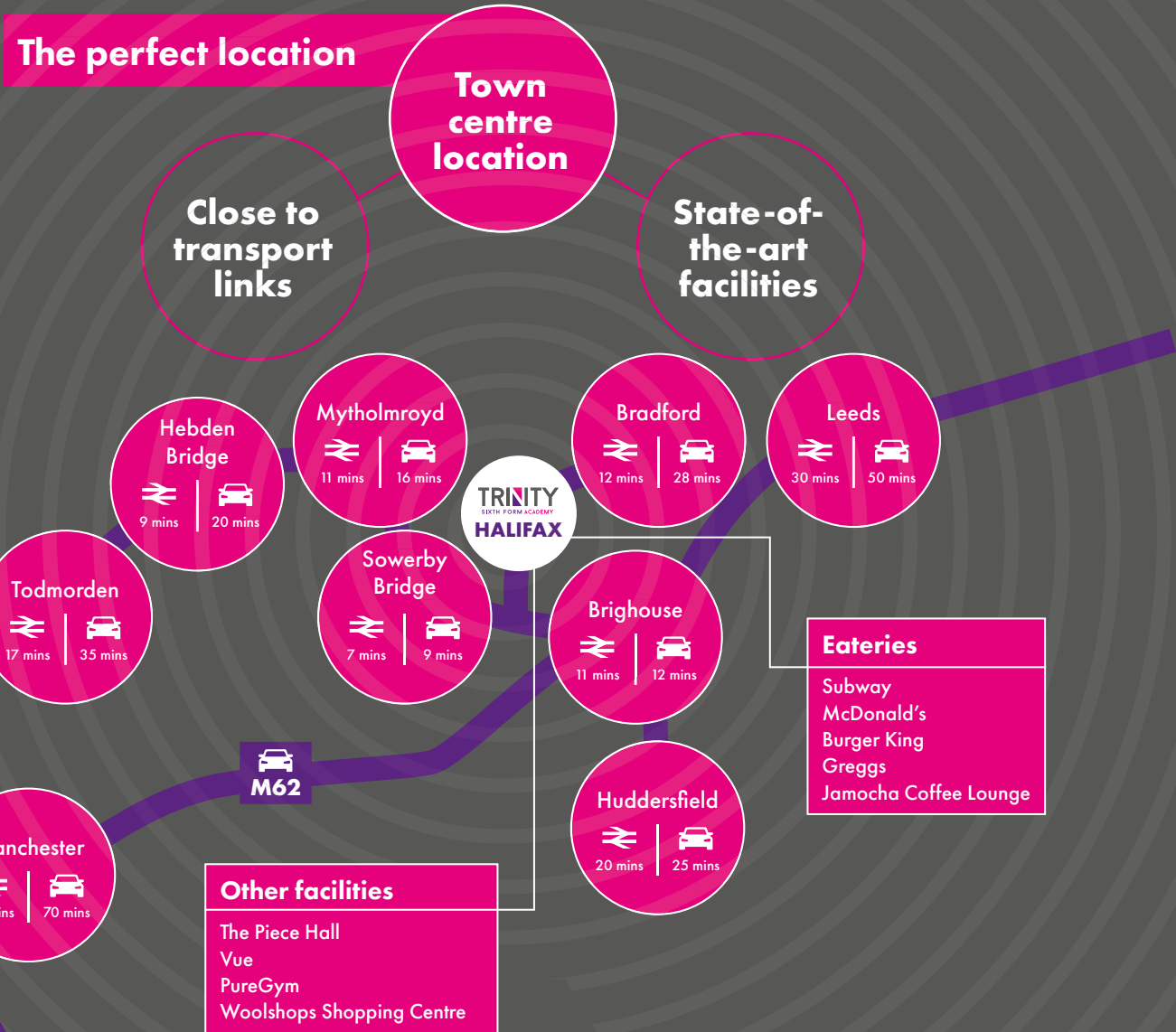
Trinity Sixth Form Academy opened its doors in September 2020 and the multi-million-pound building still has that brand new feel to it. Having a world class place to study and work does help produce world class outcomes, and both staff and students benefit from:

- State of the art IT facilities – we have over 500 PCs and laptops, all classrooms have the most up-to-date interactive whiteboards, visualizer technology, and PA systems in larger spaces.
- Over 30 subject specific classrooms which include, seminar rooms, IT rooms, the Art Barn, science demonstration labs, science laboratories.
- Trinity Eats Restaurant
- Trinity Conference Centre
- Multi-Purpose Hall
- The Achievement Centre, which provides space for up to 250 students
- Coming Soon: TSFA will benefit from a state-of-the-art fitness centre, providing free fitness access and classes to all students and staff.



Our Location

The Halifax bus station is situated next door to the college building. Halifax train station is also within walking distance (4 minutes).



Courses and Entry Requirements

We offer a comprehensive range of A-level and Vocational courses.

Our entry requirements are 5 or more GCSEs (or equivalent) graded at 4 or above, including English Language and Maths. Some subjects have their own entry requirements, please see the individual course information for full details:

Subject	Qual Type	Guidance Entry Grades
Applied Science	BTEC Ext Cert	Achieved grade 4 (or higher) in all Sciences.
Art and Design (3D Design)	A-level	No additional entry requirements – If a student is applying for a course in a subject that they have studied at GCSE it is expected that they would have achieved at least a standard pass (grade 4) in that subject. (Can only study up to 2x Art & Design qualifications)
Art and Design (Photography)	A-level	No additional entry requirements – If a student is applying for a course in a subject that they have studied at GCSE it is expected that they would have achieved at least a standard pass (grade 4) in that subject. (Can only study up to 2x Art & Design qualifications)
Biology, Chemistry, Physics	A-level	Achieved grade 6–6 (or higher) in combined GCSE Science, or grade 6 (or higher) for the single GCSE Science selected at A Level. Achieved grade 4 (or higher) in GCSE English Language. Biology & Chemistry applicants must achieve grade 5 (or higher) in Maths. Physics applicants must also enrol onto A-level Maths and achieve grade 6 (or higher) in GCSE Maths.
Business	A-level	No additional entry requirements – If a student is applying for a course in a subject that they have studied at GCSE it is expected that they would have achieved at least a standard pass (grade 4) in that subject.
Business	BTEC Ext Cert	No additional entry requirements.
Classics	A-level	Achieved grade 5 (or higher) in Classical Civilisation, History or English.
Computer Science	A-level	Achieved grade 5 (or higher) in GCSE Maths, or grade 5 (or higher) in Computer Science and grade 4 (or higher) in Maths.
Criminology	WJEC Ap Dip	No additional entry requirements.
Economics	A-level	Achieved grade 6 (or higher) in Maths and grade 5 (or higher) in English Language or English Literature.
English Language	A-level	Achieved grade 5 (or higher) in English Language.
English Literature	A-level	Achieved grade 5 (or higher) in English Literature.
Extended Project	Level 3 EPQ	Year 13 option only.

Subject	Qual Type	Guidance Entry Grades
French	A-level	Achieved grade 5 (or higher) in French.
Geography	A-level	No additional entry requirements – If a student is applying for a course in a subject that they have studied at GCSE it is expected that they would have achieved at least a standard pass (grade 4) in that subject.
Geology	A-level	Achieved grade 5–5 (or higher) in combined GCSE Science, or grade 6 (or higher) in GCSE Geography.
Health and Social Care	BTEC Ext Cert	No additional entry requirements.
History	A-level	Achieved grade 5 (or higher) in English Language or English Literature.
Information Technology	CTEC Ext Cert	No additional entry requirements.
Law	A-level	Achieved grade 5 (or higher) in English Language.
Mathematics	A-level	Achieved grade 6 (or higher) in Mathematics.
Mathematics (Further)	A-level	Achieved grade 7 (or higher) in Mathematics. (Must also be studying A-level Mathematics)
Mathematics (Core)	Level 3 Cert	Year 13 option only.
Media	CTEC Ext Cert	No additional entry requirements.
Physical Education	A-level	Achieved grade 5–4 (or higher) in Combined Science or Grade 5 or above in 2 out of the 3 single GCSE Sciences. It is essential that you take part in some form of competitive sport/physical activity on a regular basis.
Polish	A-level	Achieved grade 5 (or higher) in English Language. You will need to speak, read and write in Polish at GCSE level.
Politics	A-level	Achieved grade 5 (or higher) in English Language or English Literature.
Psychology	A-level	Achieved grade 5 (or higher) in English Language or English Literature.
Religious Education	A-level	Achieved grade 5 (or higher) in English Language or English Literature.
Sociology	A-level	Achieved grade 5 (or higher) in English Language or English Literature.
Spanish	A-level	Achieved grade 5 (or higher) in Spanish.
Sport	BTEC Ext Cert	It is desirable that students have played for a community club.

These entry requirements are at the Principal's discretion and individual cases will always be considered.

Delivery is subject to demand

BTEC Level 3 Applied Science National Extended Certificate

Below you will find some information regarding the BTEC Applied Science course. Please note that there are some specific requirements for accessing this course. If you have any questions about this course or the entry requirements then please speak to us.

What is covered?

Over the two years you will cover the following within four units:

- Principles and Applications of Science (External written exam).
- Practical Scientific Procedures and Techniques (assignments – set and marked internally).
- Science Investigation Skills (External written exam).
- Optional unit (assignments – set and marked internally).

What does the course involve?

BTEC Applied Science is an extended certificate qualification providing a unique opportunity for students to continue their study of all the sciences past GCSE whilst leaving freedom of choice in other areas of the curriculum. The subject also complements and enhances understanding of many other subjects such as health and social care, sports studies, geography and business.

The specifications are based on what scientists actually do, providing an insight into their jobs, as well as offering a challenging and rewarding academic programme. The course requires commitment and the ability to set targets in order to meet assignment deadlines. It provides the academic qualifications needed for entry to higher education and equips students with the skills required for further studies or employment.



Quick course facts

You should have a minimum of five GCSEs graded at level 4 or above, including English Language and Mathematics as well as a level 4 in all Science subjects.

Key skills you will need include the ability to produce extended pieces of writing.

The course will prepare you for entry to science related degrees or complement other further vocational courses.

The pass, merit, distinction and distinction* grades are equivalent in University points to an E, C, A or A*.



Find out more

We encourage you to contact us with any questions, or alternatively why not follow the link to access Padlet, our bespoke training resource.

A-level Art and Design



This creative course places an emphasis on drawing, materials and processes. A-level Art and Design will stretch your ability to develop a range of experiments and challenge your creative thought patterns as you develop your own specialisms in Art and Design.

You will be required to explore a range of Artists' from both contemporary and historical contexts, considering their role within contemporary culture. Work will be in a broad spectrum of materials, recorded in both visual and written form. Your personal investigation unit will be selected independently based on your passion or area of interest.

What is covered?

This course allows you to engage, explore and experiment within a diverse range of art materials. From paint to printmaking and sculpture to digital illustration, you will build a portfolio of skills and experience to continue studying art specialisms that are most appropriate to your aspirations.

During the first year you will cover a range of introductory approaches:

- Basic introduction into materials.
- Be taught Artist Research skills, and apply these to a range of artists, both contemporary and historical.
- Coursework portfolio – develop a range of your own projects based on the sea, printmaking and illustration.
- A number of final outcomes will be printed and presented in a creative manner.

During the second year you will complete:

- A personal investigation of your own design.
- The finished product will include both practical work and an essay of up to 3,000 words.
- Controlled assessment set by external exam board (15 hours supervised time).

What does the course involve?

Through this A-level, you will develop your ability to come to creative solutions, relevant to their intentions, making connections with a range of political, historical and sociologically important works of Art, both contemporary and historical. As an active practitioner, students will grow their knowledge and understanding of the context of their work within the wider history timeline of Art and Design. Students will be helped prepare for interviews at a range of higher education contexts, engaging with past alumni and external agencies to help guide their choices. Experiences include visiting lecturers from Huddersfield University and trips to Liverpool and the Yorkshire Sculpture Park.



Find out more

We encourage you to contact us with any questions, or alternatively why not follow the link to access Padlet, our bespoke training resource.

Quick course facts

You should have a minimum of five GCSEs graded at level 4 or above, including English and Mathematics.

It is desirable that you have achieved a grade 4 in an art and design subject and can show a portfolio of work at interview.

Many students go on from this A-level to undertake a one-year Foundation degree course prior to university courses or many apply to study a specialist Arts degree such as Contemporary Art or Illustration.

Destinations can include careers in galleries and education, interior designer, fashion marketing, graphic design and architecture.

A-level Art & Design (3-D Design)

The three-dimensional design course is about looking, learning, thinking and communicating ideas. It inspires imaginative thinkers, problem solvers and people who enjoy making.

You will get the chance to blend design concepts with creative thinking with practical application and learn how to use the right materials to bring your ideas to life.

What is covered?

This is a practical course that will enable you to develop an understanding of a broad range of materials and techniques. Key areas you could cover include: ceramics, sculpture, exhibition design; design for theatre, television and film, interior design, product design, environmental and architectural design, jewellery and body ornament and 3D digital design.



First Year:

- Introduction to 'design elements', through a range of guided research and design drawing sessions.
- A variety of technique workshops led by subject specialists on model making, computer aided design, woodwork using our on-site workshop, laser cutting, ceramics, sculpture and modelling.
- Developing a sketchbook record as your skills develop in response to the 'structures and surfaces' brief.

Second Year:

- Independent study on your personal investigation with the opportunity to develop a finished product in response to an idea, issue, concept or theme of your choice.
- The finished product will include a range of 3D outcomes and an essay of up to 3,000 words.
- Outcomes range from lamps to structures and jewellery to mobiles.
- Controlled assessment set by external exam board (15 hours supervised time).

What does the course involve?

This course is highly practical and will be enjoyed by those who are creative and wish to have the freedom to explore their creativity. You will undertake a range of chosen projects that will allow you to develop a high practical skill level with a range of materials. As part of this you will develop an understanding of areas relating to product design and Architectural design.

Students will be helped prepare for interviews at a range of higher education contexts, engaging with past alumni and external agencies to help guide their choices. Experiences include visiting lecturers from Huddersfield University and trips to Liverpool and the Yorkshire Sculpture Park.



Find out more

We encourage you to contact us with any questions, or alternatively why not follow the link to access Padlet, our bespoke training resource.

Quick course facts

You should have a minimum of five GCSEs graded at level 4 or above, including English and Mathematics. It is desirable that you have achieved a grade 4 in an Art and Design subject or that you can show a portfolio of work at interview.

This is a highly practical A-level but you should note that you will still need to produce written work based on research.

A-level 3D design can support include roles in architecture, interior design, product design and courses with a CAD focus.



A-level Art and Design (Photography)

The Photography A-level course is a long-established course with a legacy of successful outcomes at TSFA.

This is a popular course taught over two years that encompasses a range of photographic techniques ranging from digital, using Adobe Photoshop, to experimental mixed media and installation outcomes. The independent nature of the course is designed to prepare students for the further study of creative subjects in higher education, which last year 1/3 of our students succeeded in going on to creative arts degrees.

What is covered?

This is a practical A-level course that will build the skills needed to succeed in a range of creative career paths in the design world and beyond. This course offers you the opportunity to be creative, explore a wide range of essential techniques and enhance your imaginative and creative powers.

During the first year you will cover a range of introductory approaches:

- Basic introduction into how a camera works.
- Research into a range of artists, photographers, both contemporary and historical
- Consider the role of the image in contemporary society.

- Composition – how to compose an image in line with compositional rules.
- Studio skills – exploring how to use high key and low-key lighting equipment in a studio environment using the colleges collection of Nikon SLRs and lenses.
- Coursework portfolio – develop a range of images based on an urban landscape brief, a creative story telling portraiture brief and an advanced digital college workshop of Adobe Photoshop (software provided).
- A number of final outcomes will be printed and presented in a creative manner.
- Students are taught how to create their own sketchbooks and mixed media processes such as heat transfer printing and machine embroidery.

Throughout the second year you will build on the techniques and ideas developed during the first year to produce high-quality work including: a personal investigation including a written study on those who have inspired photographic work and an essay of up to 3,000 words; controlled assignment to a theme set by the exam board. At the end of each year the students work towards a final year exhibition.

Quick course facts

What does the course involve?

Techniques covered include a range of photographic processes and techniques such as digital collage, graphic design, special effects, animation and studio work centred on digital manipulation using Adobe Photoshop software. Students will be helped prepare for interviews at a range of higher education contexts, engaging with past alumni and external agencies to help guide their choices. Experiences include visiting lecturers from Huddersfield University and trips to the Tate gallery in Liverpool as well as the Yorkshire Sculpture Park.



Find out more

We encourage you to contact us with any questions, or alternatively why not follow the link to access Padlet, our bespoke training resource.

You should have a minimum of five GCSEs graded at level 4 or above, including English and Mathematics. It is desirable that you have achieved a grade 4 in an Art and Design subject or that you can show a portfolio of work on arrival.

You will have the opportunity to take part in a number of trips where you can apply your skills and develop your control of aperture and shutter speed.

This is a highly practical A-level but you should note that you will still need to produce written work based on research.

A-level Photography can support include roles in the digital media, graphic design, fashion or advertising.

A-level Biology

Below you will find some information regarding the GCE OCR Biology course. Please note that there are some specific requirements for accessing this course. If you have any questions about this course or the entry requirements then please speak to us.

What is covered?

You will cover the following:

- Skills of planning, implementing, analysis and evaluation of practicals.
- Cell structure, including biological molecules, membranes, cell division, cell diversity and cellular organisation.
- Exchange surfaces and transport in plants and animals.
- Biodiversity, evolution and disease.
- Communications, homeostasis and energy.
- Genetics, evolution, ecosystems, biotechnology

What does the course involve?

You will understand and learn more about the world of Biology through a range of activities and learning. There are many new exciting advances in the field of Biology which will be covered and as a young scientist, you will understand how society makes decisions about scientific issues, and how the sciences contribute to the success of the economy and society.

You will develop competence and confidence in a variety of practical, mathematical and problem solving skills. Students will complete and be teacher-assessed on a set of practical activities rather than have to complete practical coursework.

You should have a real enthusiasm for Biology if you are considering this course. It is both fascinating and interesting and many students who undertake this subject go on to Biology based professions including health care such as medicine, nursing and biomedics, veterinary science, ecology (marine & terrestrial), biotechnology and molecular biology.



Quick course facts

You should have a minimum of: Five GCSEs graded at 4 or above including English Language.

Must have: grade 5 in GCSE Maths, and a 6–6 or higher in combined GCSE science or 6 in GCSE Biology.

Content and concepts are examined over three exam papers at the end of the two year course.



Find out more

We encourage you to contact us with any questions, or alternatively why not follow the link to access Padlet, our bespoke training resource.

A-level Chemistry

Below you will find some information regarding the GCE OCR A-level Chemistry course. Please note that there are some specific requirements for accessing this course. If you have any questions about this course or the entry requirements then please speak to us.

What is covered?

The course provides a comprehensive insight into chemistry including:

- How structure and bonding affects the properties of materials.
- Trends seen in the periodic table.
- The energy changes involved in chemical reactions.
- The synthesis of organic compounds.
- An understanding of reaction mechanisms.
- The reactions of acids and bases and pH calculations.
- Calculations to find out the concentrations of different solutions.

What does the course involve?

You will develop your knowledge and understanding of some abstract chemical concepts, which can be used to describe and explain the reactions and properties of substances. You will use maths to perform detailed and sometimes complex calculations. You will develop your practical skills further, allowing you the opportunity to pursue a career in the chemical, medical or biological sciences, health care or engineering sectors.



Quick course facts

You should have a minimum of five GCSEs graded at level 4 or above, including English Language and Mathematics (at grade 5 or higher) as well as grade 6 or higher in combined GCSE science or grade 6 or higher in GCSE Chemistry.

There are five hours of teaching per week, plus five hours per week of independent study time.

This course is aimed at those with a genuine interest in all aspects of Chemistry.

It provides a good background for students who wish to pursue a degree in the chemical, biological or medical sciences.

This course could lead to careers in medicine, dentistry, or veterinary science.



Find out more

We encourage you to contact us with any questions, or alternatively why not follow the link to access Padlet, our bespoke training resource.

A-level Physics



Below you will find some information regarding the GCE OCR Physics course. This is studied as a two-year linear course. Please note that there are some specific requirements for accessing this course. If you have any questions about this course or the entry requirements then please speak to us.

What is covered?

This course provides a comprehensive insight into Physics including:

- Skills of planning, implementing, analysis and evaluation.
- Forces and motion.
- Electrical circuits.
- Waves and quantum physics.
- Thermal physics.
- Cosmology (physics of space).
- Electromagnetism.
- Medical imaging.

What does the course involve?

You will develop your Physics skills and knowledge through exploring a range of key areas to gain an understanding of the link between theory and experiment. You will develop mathematical skills and discover how to apply these in a range of situations. You will also have an opportunity to visit local universities to see Physics in action at relevant taster days. It is essential that students taking Physics also study Maths.

This course will help you to understand the importance of Physics as a human endeavour that interacts with social, philosophical, economic and industrial matters. Undertaking this course will support access to a wider range of higher education courses such as medical imaging or engineering.

How is the course examined?

The course is examined through three exam papers at the end of the course: one on classical physics, one on electrical, quantum and medical physics, and one synoptic paper. Overall, there will be six hours-worth of examinations.

What about coursework?

Practical endorsement replaces coursework. Students will complete and be teacher-assessed on a set of practical activities.



Find out more

We encourage you to contact us with any questions, or alternatively why not follow the link to access Padlet, our bespoke training resource.

Quick course facts

You should have a minimum of five GCSEs graded at level 4 or above, including English Language as well a level 6–6 or higher in combined GCSE science. If you studied GCSE Physics, you must have a level 6 in this.

Students who choose to study A-level Physics must also study A-level Mathematics, which requires a GCSE level 6 in Mathematics.

There are five hours of teaching per week, plus tutorial and home-based study time.

You will develop your mathematical and problem-solving abilities.

This course could lead to degrees in Physics, engineering and electronics amongst others.

A-level Business

Below you will find some information regarding the Pearson Business A-level course. Please note that there are some entry requirements for this course; please speak to us if you have any queries or questions.

What is covered?

There are a total of four themes across two years, each of which will be examined at the end of the course.

- **Theme one:** marketing and people – entrepreneurs and leaders.
- **Theme two:** managing business activities – financial planning and resource management.
- **Theme three:** business decisions and strategy – business growth and decision-making techniques.
- **Theme four:** global business – globalisation and global marketing.

What does the course involve?

Students will develop an understanding of meeting customer needs, managing people, financial planning, business objectives and strategy and globalisation.

You will analyse the impact key economic powers have on other countries' economies. Completing this A-level could lead to a degree in Business and could be used to help set up your own business.



Find out more

We encourage you to contact us with any questions, or alternatively why not follow the link to access Padlet, our bespoke training resource.

Quick course facts

You should have a minimum of five GCSEs graded at level 4 or above, including English and Mathematics.

You will learn how a business works, looking specifically at the key functions of

Marketing, Finance and Human Resources.

You will analyse data from existing businesses and explain how it can be used to make crucial business decisions.

You will investigate the key economic powers in the world economy and analyse the impact they have on other countries.

BTEC Business

Below you will find some information regarding the BTEC Business course. Please note that there are some entry requirements for this course. Please speak to us if you have any queries or questions.

What is covered?

There are three mandatory units and one optional unit to make up the extended certificate, which is equivalent to one A-level.

Compulsory Units:

- Exploring business
- Developing a marketing campaign
- Personal and business finance

Optional Units – a choice of one unit is studied from the following options:

- Recruitment and selection process
- Investigating customer services
- Market research
- The English legal system
- Work experience in business

What does the course involve?

Assessment:

- Unit one: assignment set and marked by teachers
- Unit two: assignment set and marked by Pearson exam board
- Unit three: externally assessed examination set and marked by Pearson exam board
- Optional unit: assignment set and marked by teachers

This course will give you a real insight into the business world and what you can expect. It will open doors to further education or even help if you are interested in running your own business. Having a part-time job and making sure you keep yourself up-to-date with what's happening in the business world will help you to succeed.



Quick course facts

You should have a minimum of five GCSEs graded at level 4 or above, including English and Mathematics.

You will learn how business works and the importance of effective marketing for business success.

You will learn key financial skills for business and for yourself.

Good time management will be needed to prepare for external assessment and completing coursework.



Find out more

We encourage you to contact us with any questions, or alternatively why not follow the link to access Padlet, our bespoke training resource.

A-level Classical Civilisation

Below you will find some information regarding the A-level Classical Civilisation course.

What is covered?

Classical Civilisation focuses on the civilisations of Greece and Rome, and is a wide-ranging subject involving the study of literature, material culture, ancient thought and ideas.

Component 1: The World of the Hero

This is a compulsory component consisting of an in-depth study of Homer's *Odyssey* and Virgil's *Aeneid*. This component is solely focused on the study of literature in translation. In this topic you will develop an increasingly sophisticated level of knowledge and understanding of the epics themselves, the way in which they were composed, and the religious, cultural and social values and beliefs of its society.

Component 2: Culture and the Arts: Imperial Image

The idea of a politician 'spinning' their public image is one which is very familiar from our contemporary media; and so this exploration of a Roman politician and his successful propaganda campaign is both highly relevant and engaging. This component involves the study of visual and material culture and this is combined with the study of literature in translation.

Component 3: Beliefs and Ideas: Greek Religion

Religion was an essential part of ancient Greek identity, permeating all strata of society and all aspects of an individual's daily life. You will not only explore the nature of the gods and their relationship with mortals, but you will be also studying the practicalities of religious ritual, and the role it played in society, alongside the functions and layout of famous temple complexes. Components in this group involve of an area of classical thought, in combination with either the study of literature in translation or visual/material culture.

What does the course involve?

The course will be assessed by three examinations, one relating to each component of the course. Assessment will be by extended writing.

Classical Civilisation is naturally particularly valued by Classics departments in UK universities, but not only by Classics departments. The study of A Level Classical Civilisation can often lead to the university-level study of Drama, English, History, History of Art, Philosophy and Politics. Classical Civilisation is listed on UCL's list of preferred A Level subjects and on Trinity College, Cambridge's list of Generally Suitable Arts A Levels. Information from UCAS shows that students who studied Classical Civilisation went on to study in such diverse disciplines as Medicine, Veterinary Science and Chemistry!



Find out more

We encourage you to contact us with any questions, or alternatively why not follow the link to access Padlet, our bespoke training resource.

Quick course facts

You should have a minimum of five GCSEs graded at level 4 or above, including Mathematics. Also a minimum of level 5 or above in either Classical Civilisation, History or English.

You don't need to know any languages, all the texts are in translation, and it doesn't matter if you haven't studied the Greeks and Romans since primary school; all you need is an interest in the ancient world and its cultures.

A passion for reading and a desire to expand your knowledge is crucial to succeeding in this course.



A-level Computer Science

Below you will find some information regarding A-level Computer Science. Please note that there are some entry requirements for this course. Please speak to us if you have any queries or questions.

What is covered?

There are a total of three mandatory units as follows:

- Computer Systems: 40% of the A-level – two hour 30 minute exam – 140 marks. Content covered: systems architecture, software and software development, exchanging data, data types and structures, legal, moral and ethical issues.
- Algorithms and Programming: 40% of the A-level – two hour 30 minute exam – 140 marks. Content covered: elements of computation thinking, problem solving and programming, algorithms.
- Programming project: 20% of A-level. Carry out a personal programming task in which you analyse a problem, design and code a solution to overcome it and then evaluate your finished program.

What does the course involve?

This course is 80% exam and 20% coursework. The first half of the course will look at general theory, programming theory and techniques as well as how computer systems work and how data is managed within them.

This course is extremely useful, especially for those who are considering roles or further education relating to IT and Computer Science. It is important that you have a strong interest in IT, especially hardware, coding and the theoretical aspects of the discipline.



Quick course facts

You should have a minimum of five GCSEs graded at level 4 or above, including English and a level 5 or above in Mathematics or Computer Science.

You don't need to have studied Computer Science before or done any computer programming. Computer programming and general Computer Science theory will be taught from the first week of the course.



Find out more

We encourage you to contact us with any questions, or alternatively why not follow the link to access Padlet, our bespoke training resource.

Criminology

Criminology is the study of crime from a social perspective, including examining who commits crimes, why they commit them, their impact, and how to prevent them.

What is covered?

- Changing awareness of crime (internal)
- Criminological Theories (external)
- Crime scene to courtroom (internal)
- Crime and punishment (external)

What does the course involve?

You will cover a range of topics over the two-year period as outlined above. In addition to the subject content, criminology will help you to develop analytical and critical ways of thinking. You will develop your extended writing skills as well as verbal communication skills. These skills are beneficial across a range of subjects.

What next?

This course, if studied alongside other appropriate Level 3 qualifications, can support students to progress onto courses such as Criminology degree, Law degree, Psychology and Sociology degrees.



Quick course facts

You should have a minimum of five GCSEs graded at level 4 or above, including Mathematics and English.

You should also keep

up-to-date with worldly developments by taking an interest in the news.



Find out more

We encourage you to contact us with any questions, or alternatively why not follow the link to access Padlet, our bespoke training resource.

A-level Economics

Below you will find some information regarding the Pearson Economics B A-level course. Please note that there are some entry requirements for this course. Please speak to us if you have any queries or questions.

What's covered?

There are a total of four themes across two years assessed by three externally assessed examinations.

The themes are as follows:

- Theme One: markets, consumers and firms – scarcity, enterprise, introducing the market, revenue, costs, profits and cash.
- Theme Two: the wider economic environment – business growth, productive efficiency, the economic cycle and the macroeconomic policy.
- Theme Three: the global economy – globalisation and economic factors in business expansion.
- Theme Four: making markets work – competition and market power, market failure, risk and financial sector.

What does the course involve?

This A-level course will give you a real insight into the world of economics. It will open doors to further education or even help if you are interested in running your own business. Having a part-time job and making sure you keep yourself up-to-date with what is happening in the business world will help you succeed.



Quick course facts

You should have a minimum of five GCSE's graded at level 4 or above, including English and Maths. A grade 6 in Maths and 5 in English is also required.

You will learn how important the economic environment is for business success.

This course will develop your understanding of how the UK is part of a global economy and how this influences economic and business decisions about resources and demand.

Economics is a social science (the study of people) that considers how/why individuals, firms and governments make decisions. Often based around allocation of science resources.



Find out more

We encourage you to contact us with any questions, or alternatively why not follow the link to access Padlet, our bespoke training resource.

A-level English Language

Below you will find some information regarding the A-level English Language course.

What is covered?

As part of this course you will study:

- Language, the individual and society – you will critically analyse two unseen texts from different periods, and produce a discursive essay on children’s language development. This is a two hour 30 minute exam and is worth 40% of the A-level.
- Language, diversity and change – you will produce one evaluative essay followed by a critical analysis of how an unseen text uses language in a specific way. You will then use this to create a piece of your own original writing. This is a two hour 30 minute exam and is worth 40% of the A-level.
- Language in action – you will produce a 2,000 word language investigation in an area of language study which interests you, and a 1,500 word piece of original writing and commentary. This is the coursework element of the A-level and is worth 20%.

What does the course involve?

English Language is an excellent way to develop your thinking and analytical skills. Through this course you will understand how language is used and the impact it has on society. It is an enjoyable and interesting course. However, it is important to recognise that it does involve a significant level of essay writing, and you need to be prepared to learn a number of technical terms and apply these in your writing.

The English Language A-level will open doors into thinking about and investigating language in completely new and different ways to anything you experienced at GCSE. It will give you the opportunity to explore a wide range of topic areas of both contemporary and older non-literary texts. You will learn about the technical terms for the techniques used, and apply these in your own writing.



Quick course facts

You should have a minimum of five GCSEs graded at level 4 or above, including Mathematics and a level 5 or above in English.

This A-level develops critical thinking and writing skills.

If you are thinking of doing English Language or Linguistics at university then this course is essential.

There are opportunities to attend special study and enrichment days.

A challenging yet rewarding A-level, which combines the scientific study of language and creative approaches to language.



Find out more

We encourage you to contact us with any questions, or alternatively why not follow the link to access Padlet, our bespoke training resource.

A-level English Literature

Below you will find some information regarding the A-level English Literature course.

What is covered?

As part of this course, you will look at a wide range of English Literature and explore both pre-20th and post-20th century poetry, prose and drama texts.

- Poetry – The first part of the exam relates to pre-20th century poetry texts which you will study and in the second part you will analyse post-twentieth century poetry. This accounts for 30% of the A-level. It is a two hour open text exam.
- Drama – One exam of two questions where you will answer one question on Shakespeare and one comparison of two plays from different periods. This is a closed text exam and accounts for 30% of the A-level.
- Unseen Texts – The first part of the exam requires a critical analysis of an unseen piece or prose from a specified time period. In the second part you will critically analyse an unseen poem. This accounts for 20% of the A-level.
- Prose – One piece of 3,000 word coursework comparing one pre-20th text with a post-20th century text. This can be an independent choice from a prescribed list. This accounts for 20% of the A-level.

What does the course involve?

This course is examined through a combination of exams and coursework as detailed above. During this course you will develop your written argument skills. It is important that you enjoy reading, as the main focus of the course is discussing and debating the issues brought forth by both present and past authors.

With debating skills as a central focus, many students who undertake this course go on to successfully complete degrees in Law, English and other Humanities subjects that require a high standard of academic essay writing.



Find out more

We encourage you to contact us with any questions, or alternatively why not follow the link to access Padlet, our bespoke training resource.

Quick course facts

You should have a minimum of five GCSEs graded at level 4 or above, including Mathematics. Also a minimum of level 5 or above in English Literature.

Essay writing and debating are crucial skills which the course helps you to develop.

The course will involve regular trips and opportunities to attend academic lectures on core texts.

A passion for reading and a desire to expand your knowledge is crucial to succeeding in this course.

Extended Project Qualification (Level 3)

What is the Extended Project Qualification (EPQ)?

- A piece of independent, in-depth research
- A written report and presentation
- Worth half an A-level
- Recognised by Oxbridge and Sutton Trust Universities

Available in Year 12 and Year 13 – criteria applies.

Research has shown that completing an EPQ makes you more likely to achieve a First Class Honours at the end of your Degree (University of Leeds & University of Southampton, 2022).

University Skills: Written Essay = 5000 words

Requires specific skills:

- Researching
- Finding sources
- Essay writing
- Referencing

Transferable skills:

- Problem solving
- Analysis
- Critical thinking
- Evaluation

How does it work?

- You will each have a 'supervisor'
- You will attend block lessons, which will teach you key skills
- You will then have a one-hour slot each week with your supervisor
- You have to physically complete:
 - A Proposal Form
 - A Log
 - A Presentation
 - A Written Report (5000 words)

How am I assessed?

- AO1 Manage (10 marks)
- AO2 Use Resources (10 marks)
- AO3 Develop and Realise (20 marks)
- AO4 Review (10 marks)

Grade Tariff points

- A* 28
- A 24
- B 20
- C 16
- D 12
- E 8



Find out more

We encourage you to contact us with any questions, or alternatively why not follow the link to access Padlet, our bespoke training resource.

Quick course facts

"We value the skills of research and independent learning that the Extended Project is designed to develop. We welcome applications from students offering the Extended Project alongside A-levels. If you offer an Extended Project, it will be taken into account. Your offer may be varied as a result, in recognition of the level of study skills you will have developed." (Newcastle University)

A-level French

Below you will find some information regarding the A-level French course. Please note that there are some entry level requirements for this course. Please speak to us if you have any queries or questions.

What is covered?

During this course you will develop the four skills established in GCSE French. Themes that are covered include:

- Current trends in French-speaking society (family, cyber society, voluntary work)
- Artistic culture in the French-speaking world (heritage, music, cinema)
- Current issues in the French-speaking society (diversity, marginalisation, crime)
- Political life in the French speaking world (politics, demonstrations, immigration)

All components of the award are externally assessed as follows:

- Paper one: listening, reading and writing, including translation into French and English. (2 hours 30 minutes, 50%)
- Paper two: writing – response to a literary text and film (two hours, 20%)
- Paper three: speaking – Part One: response to a stimulus card based on the topics studied throughout the A-level, Part Two: presentation and discussion based on the students' individual research project (21–23 minutes, 30%).

What does the course involve?

Learning any language requires enthusiasm and dedication. This is a varied and interesting course that will help you prepare for a global society, and you will be encouraged to visit a country where your chosen language is spoken.

This A-level will support your interest in business, travel, law and health. You will be exposed to new cultures, film and literature written in French, which will include studying at least one book and one film. Naturally, a passion for learning French is important.



Find out more

We encourage you to contact us with any questions, or alternatively why not follow the link to access Padlet, our bespoke training resource.

Quick course facts

You should have a minimum of five GCSEs graded at level 4 or above, including English and Mathematics as well as a Level 5 in French (Higher Tier).

This course will expose you to new cultures, film and literature from the French speaking world.

An interest in literature will therefore also help, as you will read books written in French, such as 'Kiffe Kiffe Demain' by Faïza Guène.

You will need to be committed, and able to work under your own initiative.

The ability to speak a second language is valued by many employers and an A-level in MFL is well-regarded by universities.



A-level Geography

Below you will find some information regarding the A-level Geography course. Please note that there are some entry requirements for this course; please speak to us if you have any queries or questions.

What does the course involve?

There has never been a more important time to study Geography. We are the first generation to live in the Anthropocene – the geological age where humanity has become the primary agent of environmental change. Understanding the implications of this is the primary challenge for all geographers. Geography, Alastair Bonnett has written, is one of “humanity’s big ideas”, and our age needs big ideas now more than ever before. The world needs geographers to analyse, interpret and intervene in global affairs, and to find hopeful solutions to wicked problems. A-level Geography is an exciting course that offers students a unique opportunity to understand Earth’s physical systems alongside the ways that political and economic power shape relationships between people and places. The relationship between the human and natural worlds will be explored through the study of the following topics:

Year 12 topics

- The water and carbon cycles
- Natural hazards
- Contemporary urban environments
- Changing places

Year 13 topics

- Coastal systems and landscapes
- Globalisation and global governance
- Geographical skills

Coursework (completed in year 13)

- Students carry out and write up a piece of independent field research on a subject of their choice during the first term of year 13.

The course is currently assessed by examination (80%) and coursework (20%).

Where can Geography take you?

Because of geography’s versatility, it opens up a wealth of possible career paths. Geography graduates are amongst the most employable. Common career paths include risk analysis, global finance, architecture, the Civil Service or Environment Agency. The skills you acquire are transferable across many careers. Most importantly, studying Geography will equip you with the tools you need to understand the world around you.



Find out more

We encourage you to contact us with any questions, or alternatively why not follow the link to access Padlet, our bespoke training resource.

Quick course facts

You should have a minimum of five GCSEs graded at level 4 or above, including English and Mathematics.

You will acquire skills in statistical analysis, research, report writing, analysis and evaluation. These are valued across all job sectors.

Specific careers for geographers have included working for the Met Office, the Environment Agency, or in the Civil Service.

Many geographers also find themselves working in finance, marketing, education, or in a variety of other careers.

This course is for those who are inquisitive and interested in the world around them.

A-level Geology

Below, you will find some information regarding the A-level Geology course. Please note that there are some entry requirements for this course; please speak to us if you have any queries or questions.

What does the course involve?

Geology is the study of the Earth: its structure; how it has evolved; what drives important processes such as plate tectonics?

Geology investigates how these factors affect society. How can structures be engineered to withstand geodynamic hazards such as earthquakes, volcanoes and tsunamis? How can we use monitoring to predict when volcanoes erupt? Where do vital resources such as water, oil and minerals come from? How do we know where to mine/quarry/drill for finite resources e.g., Copper, Cobalt, Oil etc. How can we mitigate the impact of sudden climate change?

Geology is a theoretical and practical science – you will not only learn inside the classroom but also outside. Practical and analytical skills will be developed which will enable you to investigate, interpret and identify features in rock specimens, outcrops and geological maps. It is compulsory to undertake four days of fieldwork for Geology over the 2-year course.

Sounds exciting, doesn't it and all of this will be covered in the WJEC/EDUCAS Geology A Level!

Year 12 topics

- Earth Structure and Global Tectonics
- Elements, Minerals and Rocks.
- Igneous, Metamorphic and Sedimentary Processes
- Maps
- Fossils and Dating

Year 13 topics

- Advanced mapping and deformation
- Advanced Past Life and Climates
- Earth Materials and Resources
- Geohazards
- Geological Evolution of Britain

The course is currently assessed 100% by Examination alongside a Practical Endorsement.

Where can Geology take you?

Geologists are on the UK Skills Shortage List. This means that people with a Geology background are highly employable as there is a shortage of Geologists in the UK. Common UK careers paths include Environmental Consultancy, Engineering and Water Management. According to the Glassdoor.com, Graduate Geologists on average earn £23,446 per year and, over the course of their career, an average of £42,462 per year. Careers are very diverse, often involving a mixture of lab work, fieldwork and report writing. Finally, a career in Geology can take you all over the world, as the energy and resources sectors worldwide need skilled Geoscientists.



Find out more

We encourage you to contact us with any questions, or alternatively why not follow the link to access Padlet, our bespoke training resource.

Quick course facts

You should have a minimum of five GCSEs graded at level 4 or above, including English. You will also need 4,4 in Combined Science and 4 in Mathematics. Geography GCSE is also useful but not essential.

A-level course (2 years)

This course is for those who are inquisitive and interested in the physical world around them.

Geology graduates have great earning potential and can go into several exciting careers, such as the mineral and oil exploration industries, geotechnical, civil and environmental engineering, environmental science, and hazard forecasting.

BTEC Health and Social Care



Below you will find some information regarding the Level 3 BTEC Extended Certificate (single award) and the Level 3 BTEC National Diploma (double award) in Health and Social Care. Please note that there are some entry requirements for this course. Please speak to us if you have any queries or questions.

What is covered?

Both courses are designed for students who wish to enter the health or social care professions. Both courses include:

Two external written exams which last one hour and 30 minutes each. These exams focus on human lifespan development and working in health and social care.

Coursework elements focused on public health, meeting individual care needs, nutrition and physiological disorders.

The BTEC National Diploma also includes a controlled assessment unit which focuses on research methods with the subsequent application of this to a given piece of health related research.

What does the course involve?

The course covers a wide range of units over a two year period and is ideal for those wishing to enter the health and social care industry. Some of the units included in the course build on the knowledge learnt at level two; however the course also provides opportunities to develop new knowledge and skills that will prepare you for a future in this industry.

The course uses a combination of theoretical and practical learning, and you will need to be well organised and enjoy working with others.



Quick course facts

What next?

Our students progress onto a range of health and social care-related courses at higher education level, such as Primary Teaching, Nursing, Midwifery, Social Work, and Early Childhood Studies.



Find out more

We encourage you to contact us with any questions, or alternatively why not follow the link to access Padlet, our bespoke training resource.

You should have a minimum of five GCSEs graded at level 4 or above, including English and Mathematics.

You must be hard working and be able to meet deadlines.

Both courses involve two external units and are supplemented with coursework elements.

Ideal for those with an interest in professions such as nursing, midwifery, social care or early years provision.

A-level History

Below you will find some information regarding the A-level History course. Please note that there are some entry requirements for this course; please speak to us if you have any queries or questions.

What is covered?

This A-level is designed to develop your understanding of change and continuity over time. You will be assessed through written coursework and exams. The following topics will be covered:

- Unit one: 1K The making of a Superpower: USA, 1865 – 1975.
- Unit two: 2S The making of Modern Britain, 1951 – 2007.
- Both of these units are examined in separate 2.5 hour exam papers.
- Unit three: coursework based on 17th Century Stuart England.

What does the course involve?

History is a fascinating subject, throughout this A-level you will look at changes and developments that have influenced the world we live in today. During the course there is a strong focus on the role of individuals and the impact that they can have on economic, social, political and international developments.

You will look at the diversity in British, European and world history. This course does involve a high level of writing, and as such you should have strong English skills. You will be supported to develop your debating and questioning skills. This A-level is a requirement for many university courses such as Law.



Quick course facts

You should have a minimum of five GCSEs graded at level 4 or above, including Mathematics and a level 5 or above in English.

You will explore changes over both long and short periods of time.

It will develop your questioning and debating skills.

This A-level involves a combination of exams and coursework.

You will be writing essays on a regular basis, including in your exams. Strong writing skills are therefore critical.



Find out more

We encourage you to contact us with any questions, or alternatively why not follow the link to access Padlet, our bespoke training resource.

OCR Level 3 Cambridge Technical Extended Certificate in Digital Media

2 Year Course Title: OCR Cambridge Technical Level 3 Extended Certificate in Digital Media

1 Year Course Title: OCR Cambridge Technical Level 3 Certificate in Digital Media

What is covered?

For the full 2 year course, there are 4 internally assessed units (Unit 3, 20, 21, 22) and 2 externally assessed written examinations (Units 1 & 2). For the 1 year course, there are 2 internally assessed units (Unit 3 & 21) and 1 externally assessed written examination (Unit 1).

Assessment

Year 12

- **Unit 3: Create a media product** Learners will plan, film and edit their own music video and compile an online portfolio to record their creative process.
- **Unit 21: Plan and deliver a pitch for a media product** Learners will come up with an original TV drama idea and pitch it to a real industry professional.

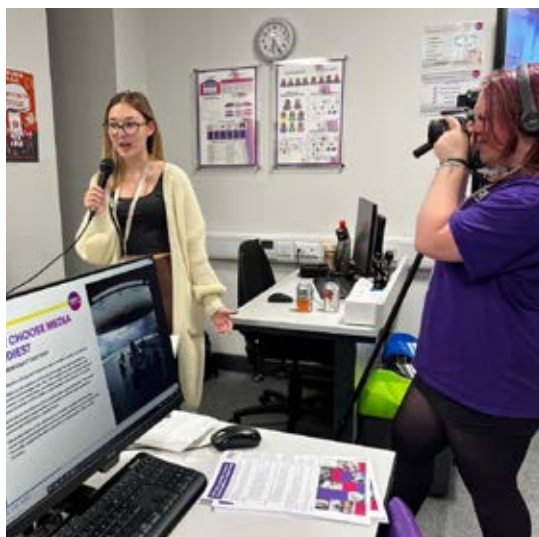
- **Unit 1: Media products and audiences** Learners will sit a 2 hour written exam exploring media representations across TV, Film, print, advertising and digital games.

Year 13

- **Unit 22: Scripting for media products** Learners will write a promotional script for their TV drama series.
- **Unit 20: Advertising Media** Learners will plan and create an advertising campaign for their TV drama series, including a TV trailer, radio trailer, poster & social media.
- **Unit 2: Pre-production and planning** Learners will sit a 2 hour written exam focused on a scenario and will explore the planning requirements for creating media products.

What does the course involve?

Learners explore how to plan, produce, market and distribute media, whilst focusing on maximising audience engagement and understanding changing technology. This is an alternative to a traditional A Level and offers a very good mix of theory and practical creative work, providing the perfect foundation for a wide variety of exciting careers in creative industries.



Quick course facts

You should have a minimum of five GCSEs graded at level 4 or above, including English and Mathematics.

You will learn about codes and conventions of TV, Film, Radio, Video Games, Social Media and Print design and how to apply them to a specific audience.

You will be taught technical/graphic design skills using professional Adobe Creative Suite software to manipulate still images, video and audio.

Current A-level equivalents for this course are:

Distinction* = A* Distinction = A Merit = grade C Pass = grade E



Find out more

We encourage you to contact us with any questions, or alternatively why not follow the link to access Padlet, our bespoke training resource.

A-level Law

Below you will find some information regarding A Level Law. Please note that there are some entry requirements for this course. Please speak to us if you have any queries or questions.

What is covered?

- The Nature of Law, the Legal System and Law Making
- Criminal Law
- Tort Law
- Human Rights Law

Assessment will be via three 2-hour exams, taken in Year 13. Knowledge, understanding, application and evaluation are assessed through a combination of 8, 12 and 20-mark essays.

What does the course involve?

Studying Law gives you an understanding of the role of Law today and raises awareness of the rights and responsibilities of individuals. You will cover a range of topics, as outlined above. In addition to the subject content, A Level Law will help you to develop analytical and critical ways of thinking.

You will develop your extended writing skills as well as verbal communication skills. These skills are beneficial across a range of subjects.

What next?

Studying A Level Law will equip you with skills that are highly regarded in the legal profession, such as: independent research skills, time management skills, the ability to work as a team and to work to independent deadlines. Many students take History, an English or Sociology as these complement the content covered in Law. If you decide to study Law as either a degree at university or through an apprenticeship, you must be able to manage a vast amount of reading and manage your time effectively. You will be supporting on many cases at the same time, so being able to juggle tasks is a must have skill.



Quick course facts

You should have a minimum of five GCSEs graded at level 4 or above, including Mathematics and a level 5 or above in English Language and English Literature.

You should also keep up-to-date with world developments by taking an interest in global current affairs.

Throughout the course, you will develop skills for independent learning, the ability to solve problems and work alongside other professionals.



Find out more

We encourage you to contact us with any questions, or alternatively why not follow the link to access Padlet, our bespoke training resource.

A-level Mathematics

Below you will find some information regarding the A-level Mathematics course. Note that there are some entry requirements for this course. Please speak to us if you have any queries or questions.

What is covered?

A-level Mathematics builds primarily on algebra and coordinate geometry skills studied in GCSE Mathematics. The course contains two main strands – pure mathematics and applied mathematics, the latter of which splits evenly between statistics and mechanics.

In pure mathematics, you will be introduced to new concepts such as the binomial series expansion, trigonometric equations, logarithms, and calculus. In statistics, you will learn about statistical measures, probability distributions and hypothesis testing while mechanics explores equations of motion and forces. There is a strong focus on mathematical modelling with real-life applications throughout.

What does the course involve?

There are three 2-hour examinations at the end of Year 13; the first two examinations cover the pure mathematics content while the third paper is reserved for statistics and mechanics only. Each paper contributes one third to your final grade. Lessons will introduce the skills necessary to answer the examination questions through printed notes and regular teacher support. There is no coursework component.



Quick course facts

You should have a minimum of five GCSEs (including English) graded at 5 or above and a grade 6 or above in GCSE Mathematics.

This course will reinforce and extend the mathematics used in many other A-level subjects such as Psychology, Geography, Biology, Chemistry and Physics.

The course duration is two years.

This course opens up many opportunities in higher education. A-level Mathematics is highly regarded by employers.

UCAS points range from 16 for a grade E to 56 for an A*.

A Casio Classwiz calculator is required.



Find out more

We encourage you to contact us with any questions, or alternatively why not follow the link to access Padlet, our bespoke training resource.

A-level Further Mathematics

Below you will find some information regarding the A-level Further Mathematics course. Note that there are some entry requirements for this course. Please speak to us if you have any queries or questions.

What is covered?

A-level Further Mathematics includes four modules, all of equal value.

You will study:

- Core Pure Mathematics 1 and Core Pure Mathematics 2.
- Two modules from the following: Further Pure 1, Further Pure 2, Further Mechanics 1, Further Mechanics 2, Further Statistics 1, Further Statistics 2, Decision 1 and Decision 2.

What does the course involve?

There are four 90-minute examinations written at the end of Year 13. Two of these are compulsory Further Mathematics modules while the other two are optional modules chosen from a variety of Statistics, Mechanics, Discrete/Decision Mathematics and additional Pure Mathematics.

There is no coursework involved with this A-level.

Please note that approximately 90% of this qualification involves algebra. If you are considering studying mathematics at university then this course is ideal for you, as it will set you apart from your peers. It is also very useful if you are considering studying computer science at degree level.



Quick course facts

You should have a minimum of five GCSEs graded at level 5 or above, including English and a grade 7 in Mathematics.

In order to enrol on this course, you will also need to be enrolled on A-level Mathematics. With double the amount of maths lessons, you will complete all of A-level Mathematics in year 12 and then study A-level Further Mathematics in year 13.

This course is very useful if you hope to study computing or pursue a career in engineering or finance.

A Further Mathematics A-level would set you apart from other applicants that you may compete against later in life.

The course involves rigorous use of algebraic skills, problem solving and logic.



Find out more

We encourage you to contact us with any questions, or alternatively why not follow the link to access Padlet, our bespoke training resource.

Level 3 Mathematical Studies (Core Maths)

Below you will find some information regarding the Level 3 Mathematical Studies course. Please note that there are some entry requirements for this course. Please speak to us if you have any queries or questions.

What is covered?

AQA Mathematical Studies, more commonly known as Core Maths, is accredited by Ofqual as a Level 3 qualification; equivalent to an AS qualification. Students learn mathematical techniques that apply directly to real-life situations. This makes the course quite distinct from AS mathematics. Much of the content develops ideas introduced at GCSE with only 20% of the course devoted to A-level content. Core Maths supports a wide range of current post-16 qualifications, including non-mathematical AS and A-levels and vocational courses.

What does the course involve?

There are two modules, each with a 90-minute exam written at the end of Year 13. The first paper assesses comprehension of mathematical techniques; the second assesses applications and problem solving. There is no coursework involved. It requires the use of algebra, probability and logic and reasoning, including links to the real world.



Quick course facts

You should have a minimum of five GCSEs (including English) graded at 5 or above and, importantly, a grade 5 or above in GCSE Mathematics.

This course will reinforce the mathematics used in many other A-level subjects.

The mathematics content is 80% GCSE and 20% A – Level standard.

The course is covered over one year.

This course allows you to continue to study maths without having to commit to a full A-level.

UCAS points awarded range from 6 for a grade E to 20 for a grade A.



Find out more

We encourage you to contact us with any questions, or alternatively why not follow the link to access Padlet, our bespoke training resource.

A-level Physical Education



Below you will find some information regarding the A-level Physical Education course. Please note that there are some entry requirements for this course; please speak to us if you have any queries or questions.

What does the course involve?

A-level Physical Education offers a holistic and in-depth insight into a wide range of intriguing and interesting topics. It is an exciting course that provides students with a unique opportunity to gain powerful knowledge across a range of important sporting disciplines. Content includes analysing the impact of exercise on various body systems, evaluating the commercialisation of modern-day sport, discussing the growth of technology and researching the importance of sports psychology on sporting performance. The aim is to equip students with the knowledge, skills and behaviours required to be successful at University and in the work place.

Both years focus on three areas that are constantly revisited to ensure maximum retention.

Year One:

- Applied Anatomy & Physiology
- Skill Acquisition
- Sport and Society

Year Two:

- Exercise Physiology and Biomechanical Movement
- Sports Psychology
- Sport and Society and the role of technology in Sport

The course is assessed by examination (70%) and coursework (30%). The coursework element is broken down into a practical assessment in one sport (see AQA specification for the list of accepted sports) (15%) and a written performance analysis piece (15%).

Quick course facts

Where can Physical Education take you?

A Level PE can lead to a range of further education courses before progressing on to a range of careers. The skills you acquire are transferable across many careers. Students utilise the physiological and anatomical knowledge to move onto courses including sports nutrition, sports science, sports medicine, sports psychology and various roles in the NHS. In addition, the skills, knowledge and behaviours learnt are transferable and can be applied to a range of courses outside of the sporting sector.



Find out more

We encourage you to contact us with any questions, or alternatively why not follow the link to access Padlet, our bespoke training resource.

You should have a minimum of five GCSEs graded at level 4 or above, including English and Mathematics.

In addition, you must achieve a 5 or above in GCSE Science and take part in sport/physical activity on a regular basis.

You will acquire skills in performance analysis, data interpretation, research, extended writing, analysis and evaluation. These are valued across all job sectors.

Specific careers in the sport and health sector include sports medicine, dietician, nursing, physiotherapy, performance analysis, sports business/marketing and sports journalism.

A-level Polish

Below you will find some information regarding the A-level Polish course.

What is covered?

Paper 1: Reading & writing

- Written exam: 2 hours 30 minutes
- This topic will include reading and responding to a variety of texts written for different purposes, drawn from a range of authentic sources, and an individual research project about tourism in Poland: the development of a tourist infrastructure, popular tourist sites/places of interest, and regional gastronomy

Paper 2: Writing

- Written exam: 2 hours
- You will be studying
- Text: Jarosław Iwaszkiewicz, Panny z Wilka and Brzezina
- Film: Katyn: Andrzej Wajda (2007)

Paper 3: Listening, reading & writing

- Written exam: 2 hours 30 minutes
- Listening and responding to spoken passages
- Reading and responding in writing to an unseen target language essay question on a listening passage.

What does the course involve?

The approach focuses on how Polish-speaking society has been shaped socially and culturally, and how it continues to change.

You will be studying

- aspects of the social context, focusing on issues such as life for those on the margins of Polish-speaking society, as well as looking at the positive influences of diversity
- aspects of the artistic life of Poland
- aspects of the political landscape in Poland, for example looking at the impact of emigration on Polish society and the advantages and challenges of the EU for Poland.

A-level students will be expected to have studied the grammatical system and structures of the language during this course. You will develop both your knowledge and understanding of themes relating to the culture and society of Poland, and your language skills. You will do this by using authentic spoken and written sources in Polish.



Quick course facts

You should have a minimum of five GCSEs graded at level 4 or above, including

Mathematics and a level 5 or above in English.

This course will enable you to develop your linguistic skills alongside your understanding of Polish culture and society.

Throughout your studies, you will learn the language in the context of Poland and learn about the issues and influences which have shaped the country. You will study texts and film and have the opportunity to carry out independent research on an area of your choice.

You need to speak, read and write in Polish at GCSE level.



Find out more

We encourage you to contact us with any questions, or alternatively why not follow the link to access Padlet, our bespoke training resource.

A-level Politics

Below you will find some information regarding the A-level Politics course. Please note that there are some entry requirements for this course; please speak to us if you have any queries or questions.

What is covered?

This A-level is designed to develop critical thinking and an awareness of the nature of politics and the relationship between citizens and institutions of government.

You will cover the following:

First Year:

- You will explore the role of people and politics looking at what politics is, what political parties are, different electoral systems and what role pressure groups play in our system.
- You will go on to look at how the United Kingdom is governed with a focus on the roles of Parliament and the Prime Minister.
- Year 12 ends with a detailed study of political ideologies, focusing on: liberalism, conservatism, socialism and anarchism.

Second Year:

- Focusing on a comparison of the UK system of government with the US system.
- There will be three units of study across Years 12 and 13 which are examined externally.
- All three exams will be sat at the end of Year 13.

What does the course involve?

This course will help you explore how different political systems work. It is a fascinating subject that will see you developing a deeper understanding of the government and discover more about how people resolve conflict in society peacefully through political discussion and agreement.

You will undertake a wide range of research, and this subject is crucial if you are considering taking Politics at university. However, it will also support other related subjects such as Economics, History, Psychology and Sociology.



Find out more

We encourage you to contact us with any questions, or alternatively why not follow the link to access Padlet, our bespoke training resource.

Quick course facts

You should have a minimum of five GCSEs graded at level 4 or above, including Mathematics and a level 5 or above in English.

You will learn about how the political system works, and how it is influenced.

This course will develop your questioning and debating skills.

You will be assessed through exams and coursework.

A qualification in politics supports a wide range of careers.

If you are keen to undertake this course, reading a quality newspaper is a good idea.

A-level Psychology

Below you will find some information regarding the A-level Psychology course. Please note that there are some entry requirements for this course. Please speak to us if you have any queries or questions.

Psychology is the scientific study of human behaviour. Psychologists are interested in explaining why people behave the way they do, and in developing techniques to improve the quality of people's lives.

What is covered?

- Paper one: social influence, memory, attachment, psychopathology (two hours).
- Paper two: approaches in psychology, biopsychology, research methods (two hours).
- Paper three: issues and debates in psychology, relationships, schizophrenia, forensic psychology (two hours).

What does the course involve?

You will cover a range of topics over the two year period as outlined above. Psychologists are interested in explaining human behaviour in all its forms; they create a variety of theories in order to do this.

You will be encouraged to evaluate these and consider the extent to which research supports or challenges them. Psychologists conduct research to develop their theories, this is an important aspect of the course and you will have the opportunity to carry out several pieces of small-scale research and analyse your results using statistical tests.



Quick course facts

You should have a minimum of five GCSEs graded at level 4 or above, including Mathematics and level 5 or above in English.

Psychology involves critical thinking and the ability to develop an argument.

You will be encouraged to apply your knowledge to real world examples.

The exams include a combination of multiple choice questions, short answer and extended writing questions.

You will gain an insight into why people behave the way they do.



Find out more

We encourage you to contact us with any questions, or alternatively why not follow the link to access Padlet, our bespoke training resource.

A-level Religious Studies

Below you will find some information regarding the A-level Religious Studies course. Please note that there are some entry requirements for this course; please speak to us if you have any queries or questions.

What is covered?

There are three main components of this new A-level subject:

- **Philosophy** – looking at a variety of topics such as: arguments for the existence of God, evil and suffering, religious experience and religious language, miracles and life after death.
- **Ethics** – looking at a variety of topics such as: ethical theories, issues of human life and death, issues of animal life and death, introduction to meta-ethics, free will and moral responsibility, conscience, Bentham and Kant.
- **An in-depth study of Christianity** – looking at a variety of topics such as: sources of wisdom and authority, God, self, death and the afterlife, good conduct and key moral principles, expression of religious identity, religion, gender and sexuality, religion

and science, religion and secularisation, religion and religious pluralism.

What does the course involve?

The course will require an understanding of the relationship between religion and philosophy and between religion and ethics; looking specifically at how religion influences philosophy and ethics and how religion is influenced by them.

You will need to be able to inform your opinions on matters and discuss them thoroughly, as well as showing understanding of the opinions of others in an evaluative and analytical way.



Quick course facts

You should have a minimum of five GCSEs graded at level 4 or above, including

.....
Mathematics and a level 5 or above in English.
.....

This is a thought-provoking and inspiring subject, which will help you form and critique arguments and write persuasive essays.
.....

These critical and evaluative skills are sought by universities and employers in areas of: law, education, social work, politics, medicine, administration and the media.
.....



Find out more

We encourage you to contact us with any questions, or alternatively why not follow the link to access Padlet, our bespoke training resource.

A-level Sociology



Do you want to know why we do the things we do? Sociology is an exciting subject which helps you understand the society we live in.

With a focus on contemporary issues, sociology helps you to answer questions such as: Why do we have to go to school? Why do we live in families? What are the benefits of religion? Why do some people commit crime? Sociology will make you question things that previously you may have taken for granted. You will look at how we can study society using a range of methods and which are the most appropriate for different areas of social life. You will also examine a range of theoretical perspectives or ways of seeing the world.

Sociology is the study of society; it challenges common sense assumptions in order to seek answers to some of the big questions, for example 'What causes people to commit crime?' Sociologists are interested in the way in which society shapes our behaviour.

What is covered?

- **Paper one:** education, methods in context, theory and methods (two hours)
- **Paper two:** families and households, beliefs in society (two hours)
- **Paper three:** crime and deviance, theory and methods (two hours)

What does the course involve?

You will cover a range of topics over the two year period as outlined above. In addition to the subject content, sociology will help you to develop analytical and critical ways of thinking. You will develop your essay writing skills as well as verbal communication skills. These skills are beneficial across a range of subjects.

Quick course facts

What next?

Sociology provides an excellent set of skills for entry to most university degrees including those related to social sciences, anthropology, and criminology. Sociology students may follow careers in a wide range of areas, such as social work, law, journalism, the caring professions, policing, the civil service, advertising, market research, teaching, management, and business.



Find out more

We encourage you to contact us with any questions, or alternatively why not follow the link to access Padlet, our bespoke training resource.

You should have a minimum of five GCSEs graded at level 4 or above, including Mathematics and a level 5 or above in English.

Sociology involves a high level of essay writing where you will develop your analytical skills.

You will gain an insight into how societies are formed and run.

If you are interested in this A-level then shows such as 'Mock the Week' and Question Time will prove helpful.

You should also keep up-to-date with worldly developments by taking an interest in the news.

A-level Spanish

Below you will find some information regarding the A-level Spanish course. Please note that there are some entry level requirements for this course. Please speak to us if you have any queries or questions.

What is covered?

Students will study four themes with various sub-themes as outlined below:

- Aspects of Hispanic society (Modern and traditional values, cyberspace, equal rights)
- Artistic culture in the Spanish-speaking world (Idols, regional identity, heritage)
- Social issues and trends: Multiculturalism (Immigration, racism and integration)
- Aspects of political life in the Hispanic world (youth, monarchies and dictatorships, popular movements)
- All components of the award are externally assessed as follows:
 - Paper one: listening, reading and writing (2 hours 30 minutes, 50%).
 - Paper two: writing – response to a literary text and film (2 hours, 20%).

- Paper three: speaking – Part One: response to a stimulus card based on the topics studied throughout the A-level, Part Two: presentation and discussion based on the students' individual research project (21–23 minutes, 30%).

What does the course involve?

Learning any language requires enthusiasm and dedication. This is a varied and interesting course that will help you prepare for a global society, and you will be encouraged to visit a country where your chosen language is spoken.

This A-level will support your interest in business, travel, law and health. You will be exposed to new cultures, film and literature written in Spanish, which will include studying at least one book and one film. Naturally, a passion for Spanish is important.



Quick course facts

You should have a minimum of five GCSEs graded at level 4 or above, including English and Mathematics as well as a level 5 in Spanish (Higher Tier).

This course will expose you to new cultures, film and literature from the Spanish speaking world.

An interest in literature will therefore also help, as you will read books written in Spanish, such as 'Como agua para chocolate' by Laura Esquivel.

You will need to be committed, and able to work under your own initiative.

The ability to speak a second language is valued by many employers and an A-level in MFL is well-regarded by universities.



Find out more

We encourage you to contact us with any questions, or alternatively why not follow the link to access Padlet, our bespoke training resource.



BTEC L3 National Extended Certificate in Sport

Below you will find some information regarding the BTEC Level 3 Extended Certificate in Sport. Please note that there are some entry requirements for this course. Please speak to us if you have any queries or questions.

What does the course involve?

Due to the nature of the course, there will be some level of physical activity. However, this BTEC predominantly involves theoretical work for exams and coursework modules.

This course features an external written exam and a coursework unit during each academic year.

This is a specialist qualification that focuses on particular aspects of sport, including:

Year one

- **Unit 1** – Anatomy & Physiology – External exam – January exam
- **Unit 3** – Professional Development in the Sports Industry – Coursework

Year two

- **Unit 2** – Fitness Training and Programming for Health, Sport and Well-being – January exam
- **Unit 5** – Application of Fitness Testing – Coursework

The BTEC Level 3 Extended Certificate is equivalent to one full A-level.

Quick course facts

Where can Physical Education take you?

BTEC L3 Sport can lead to a range of further education courses before progressing on to a range of careers. The skills you acquire are transferable across many careers. Students utilise the physiological and anatomical knowledge to move onto courses including sports coaching, personal training, sports nutrition, sports science, sports medicine, sports psychology and various roles in the NHS. In addition, the skills, knowledge and behaviours learnt are transferable and can be applied to a range of courses outside of the sporting sector.



Find out more

We encourage you to contact us with any questions, or alternatively why not follow the link to access Padlet, our bespoke training resource.

You should have a minimum of five GCSEs graded at level 4 or above including English, Mathematics and Science.

It is desirable that students have a keen interest in physical activity and sport.

This BTEC course is coursework based with a variety of assessment methods.

This course prepares you for both the world of work and further education in the sporting industry.

The BTEC Level 3 is equivalent to one full A-level and works great alongside Biology, Chemistry and Psychology.

TRINITY

SIXTH FORM ACADEMY

Policy:	Admissions	Lead professional:	M Fitzsimons – Principal
Date of review:	December 2023	Status:	Statutory
Date of next review:	December 2024	Name of academy:	Trinity Sixth Form Academy

1 Introduction

- 1.1 There are 420 places available.
- 1.2 Applications will be accepted from current Year 11 students wishing to join Trinity Sixth Form Academy (TSFA) in Year 12.
- 1.3 Courses are offered at Level 3 in both academic and applied general subjects.

2 Entry requirements

- 2.1 TSFA's minimum entry requirements for all applicants are as detailed below:
 - 5 GCSEs at grade 4 or above.
 - A GCSE in English Language/Literature and Mathematics at grade 4 or above.
- 2.2 Subject specific requirements – please refer to the TSFA website for further details.

3 Order of priority

- 3.1 TSFA will offer places to learners in the following order of priority:
 - 3.1.2 **Priority 1:**
 - Students who attend a TMAT academy (Trinity Academy Halifax, Trinity Academy Grammar, Trinity Academy Bradford, Trinity Academy Leeds, Trinity Academy St. Edwards or Trinity Academy Cathedral) or a partner school (Rastrick High School).
 - 3.1.3 **Priority 2:**
 - All other learners.

4 Admission Meetings

- 4.1 Consideration will be given to all aspects of the application, as well as places available on requested subjects, before an admission meeting can be arranged.
- 4.2 During the admission meeting students must meet the following criteria:
 - 4.2.1 • A strong commitment to the mission and the ethos of TSFA.
 - 4.2.2 • Confirmation that predicted grades that are likely to meet the minimum entry requirements, as well as any additional subject requirements.
- 4.3 Students should bring their latest progress report/mock exam results to the meeting.
- 4.4 Students should be aware that TSFA staff may discuss predicted grades with their school.
- 4.5 In some cases, we may feel that there are no suitable courses available for the applicant or the applicant will not benefit from our courses and suggest alternative courses elsewhere.
- 4.6 TSFA reserves the right to refuse admission if previous behaviour, attendance, effort, achievement or any other significant factor has cause for concern, even if a conditional offer has already been made.
- 4.7 TSFA maintains the right to withdraw an offer if a student submits false or misleading information, or is involved in misconduct on or off the academy site.
- 4.8 TSFA has the right to withdraw a course if there are insufficient numbers of students, or to suspend applications for courses which are full. In these cases, applicants will be informed prior to enrolment and suitable alternatives investigated, where

appropriate.

5 Offers

- 5.1 Offers of a place to study at TSFA are made following the admission meeting.
- 5.2 Offers are conditional on achieving the minimum entry requirements and any subject specific entry requirements, where applicable.
- 5.3 Offers are also subject to receiving a satisfactory report from school, which indicates a good record of attendance, punctuality, general behaviour, and attitude to learning.

6 Late Applications

- 6.1 Any application received by TSFA after the application deadline will be considered a late application and the student will be placed on the waiting list.
 - a. Late applications can be made via the academy website.
 - b. Students placed on the waiting list will be invited to an admission meeting at the Principal's discretion.
 - c. Consideration will be given to all aspects of the application form as well as places available on requested subjects before an admission meeting can be arranged. Any exceptional circumstances should be included in the application form.
 - d. Admission meetings will take place before an offer of a place can be made.

7 Appeals Process

- 7.1 If an applicant wishes to appeal regarding any decision, he/she is advised to make the case in writing to the Principal within two weeks of the decision.
- 7.2 The Principal has the sole right to receive appeals and will make the final judgement in relation to appeals about admissions.

Notes

- 1 TSFA cannot accept applications from students residing outside of the UK.
- 2 Only in exceptional circumstances will current TSFA students be authorised to restart Y12.
- 3 Students wanting to join TSFA in Year 12 from another post-16 institution will only be considered in exceptional circumstances.
- 4 Applications from students who will be 18 years or older when they plan to start studying will not be considered as the academy has no provision for adult learners.
- 5 Any application received after the application deadline will be considered a late application and the student will be placed on the waiting list.
- 6 All offers are subject specific, meaning that the offer of a place is exclusively linked to the subjects identified within the offer.



TRINITY

SIXTH FORM ACADEMY

Trinity Sixth Form Academy, Northgate House, Northgate, Halifax, HX1 1UN
T: 01422 240 033 | E: contactus@sixth.trinitymat.org | W: sixth.trinitymat.org

  @trinitysixthformacademy |  @TrinityTSFA